

VOLUME DE CONCRETO = 5,80 M3  
ÁREA DE FORMA = 49,00 M2

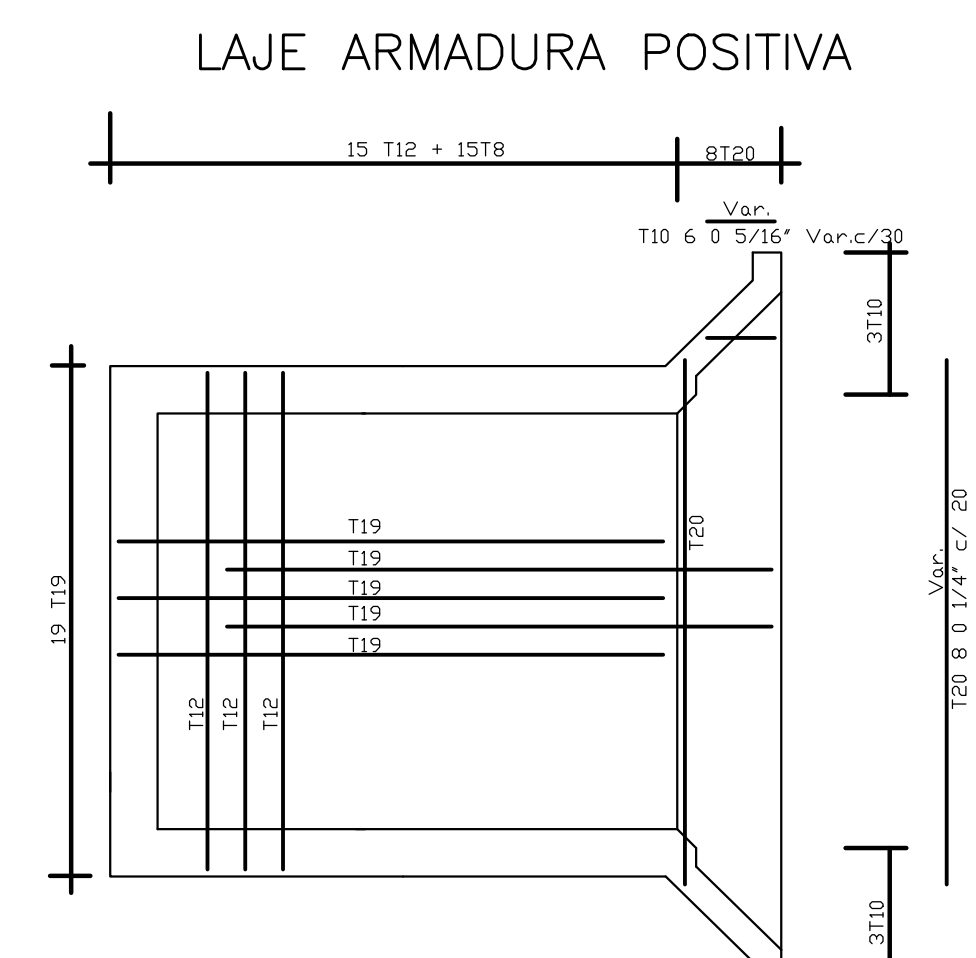
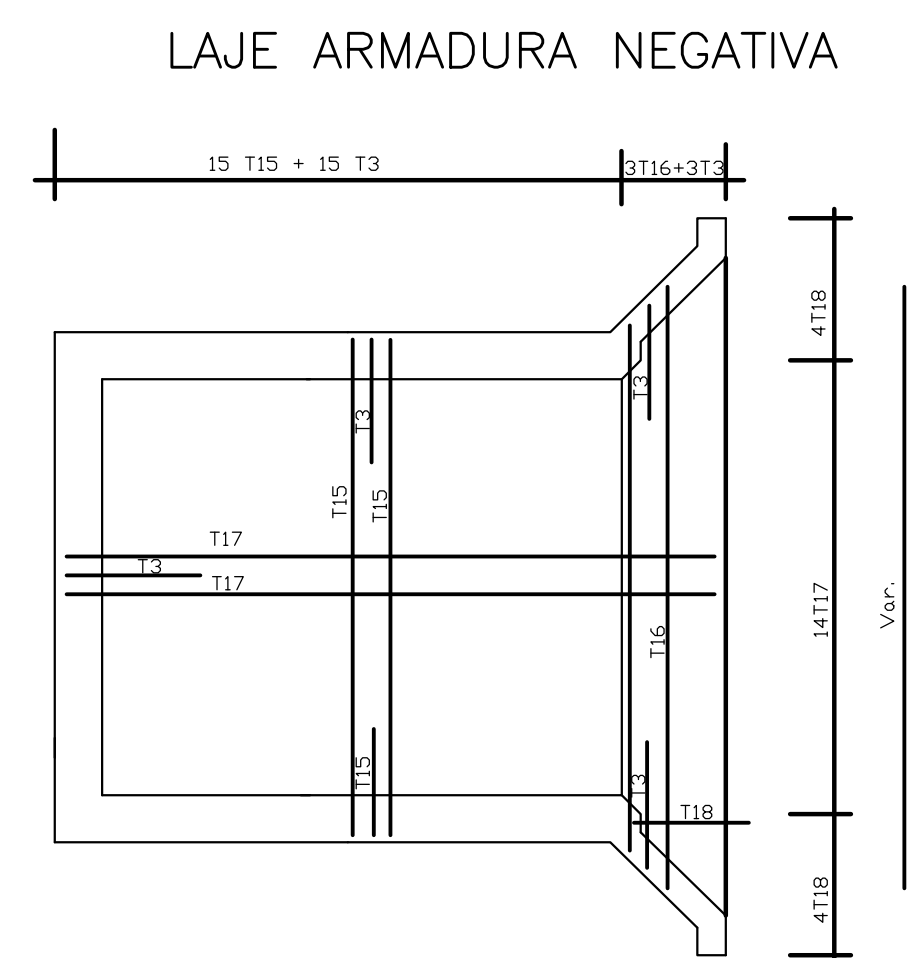
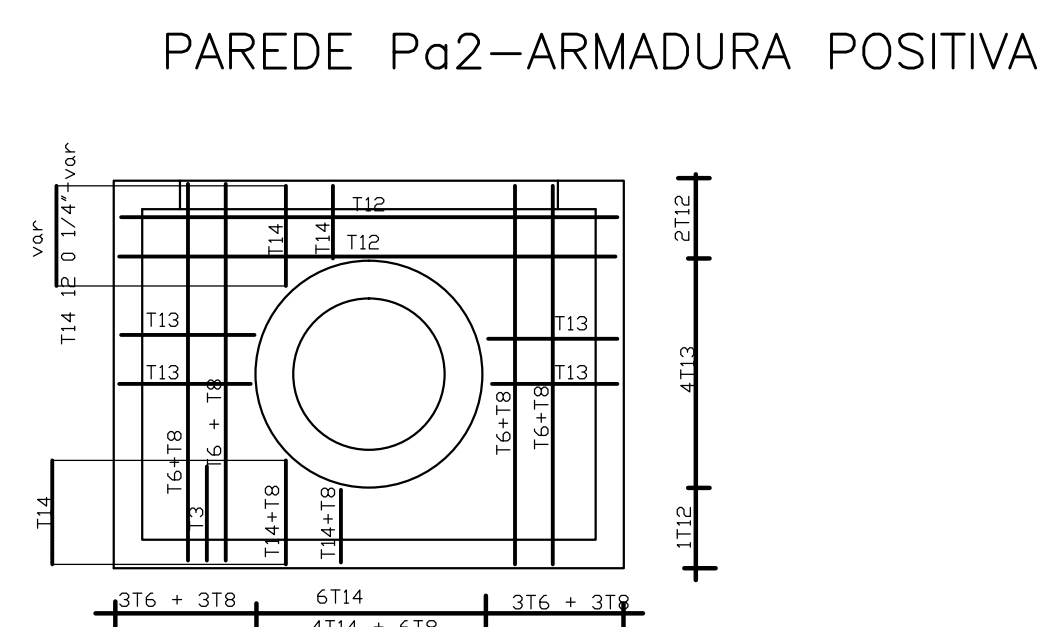
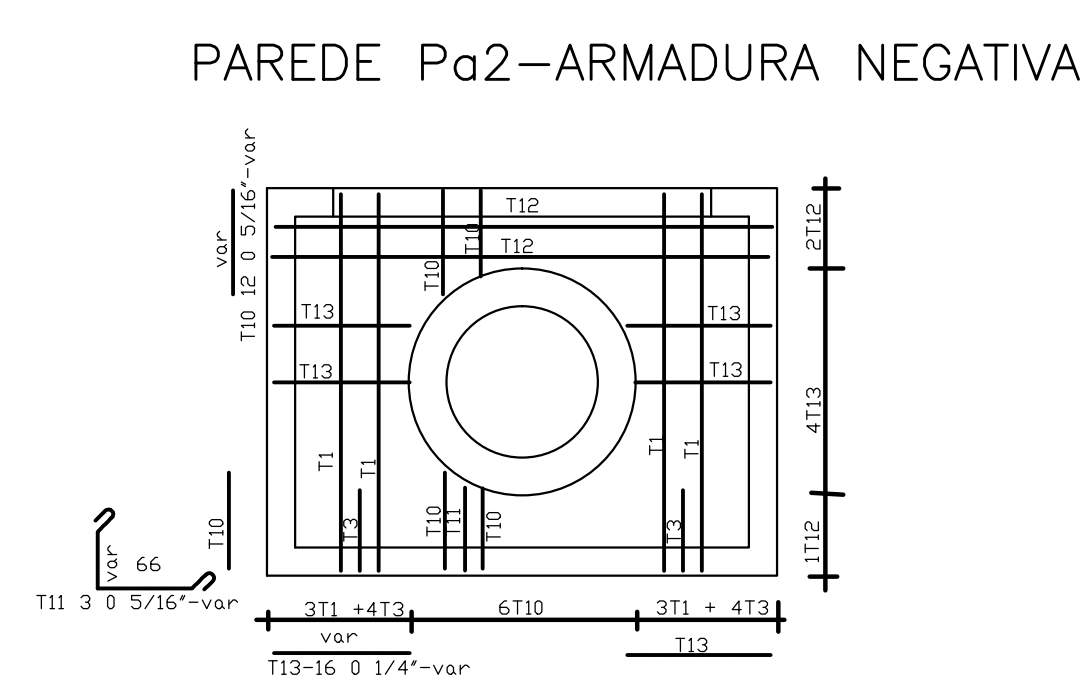
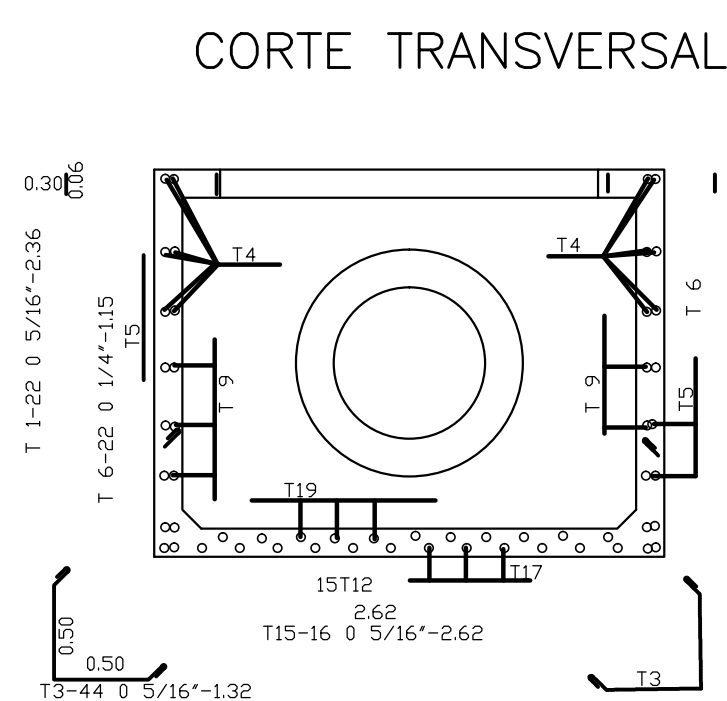
CANAL EM DEGRAUS

VOLUME CONCRETO FCK:15,0 MPA = 4.20 M3  
AÇO = 232,00 KG

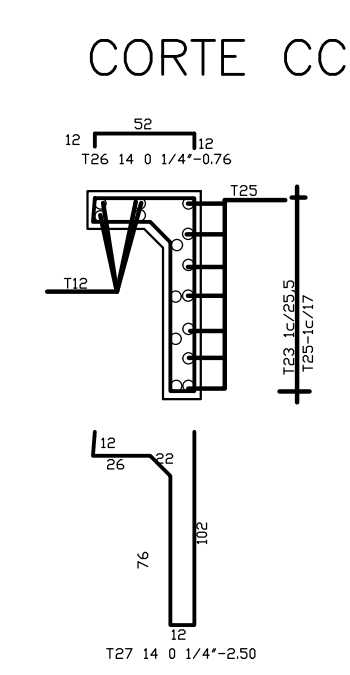
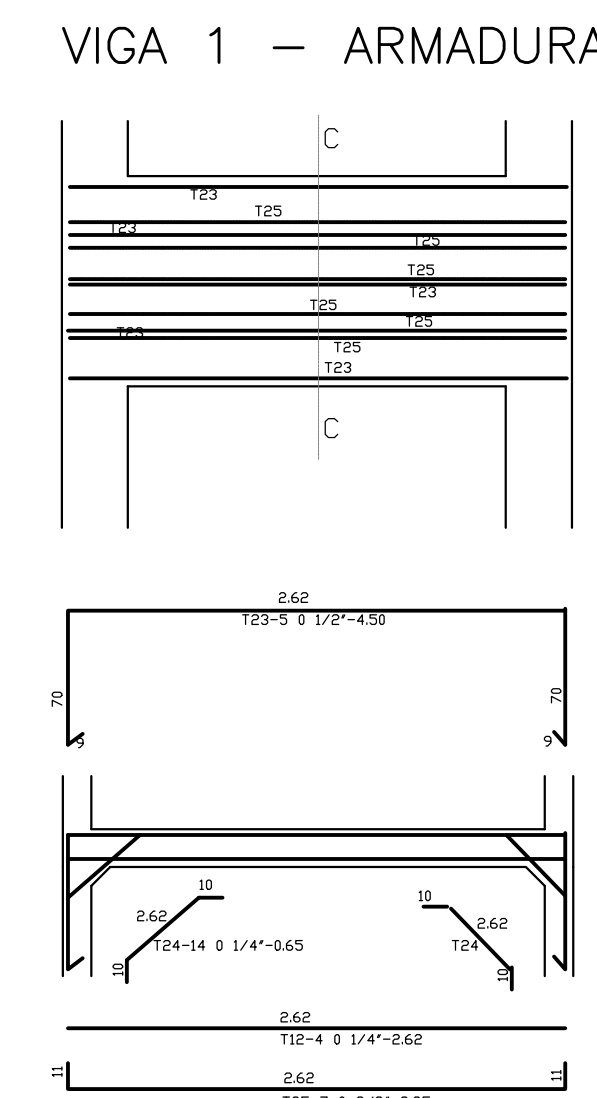
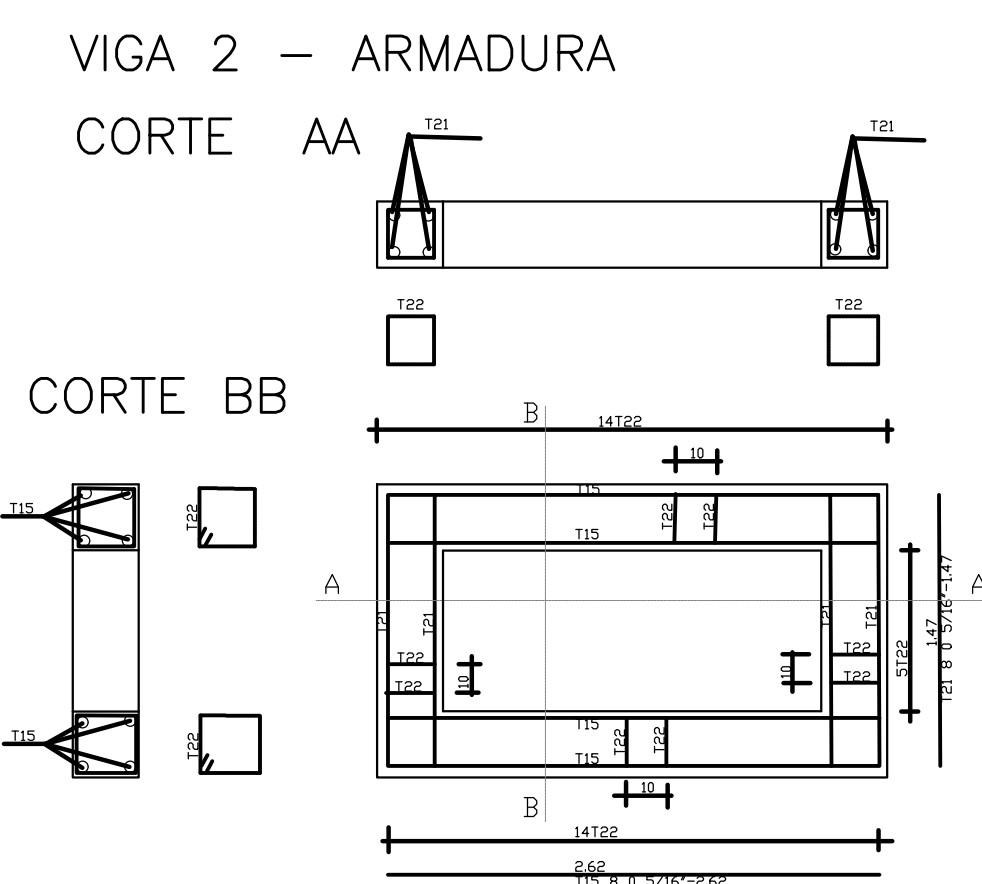
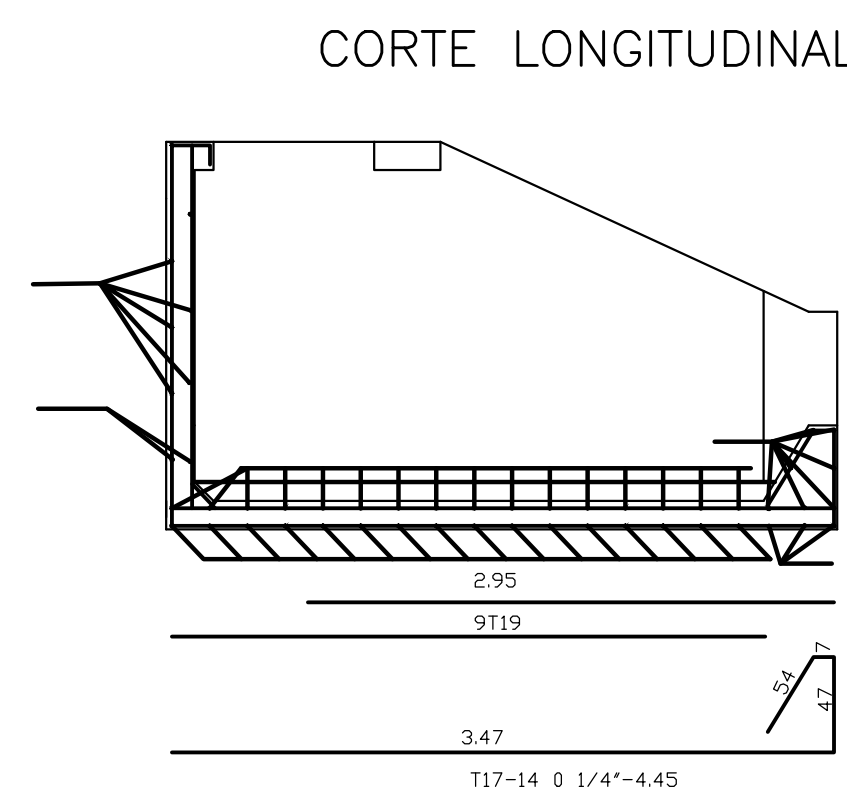
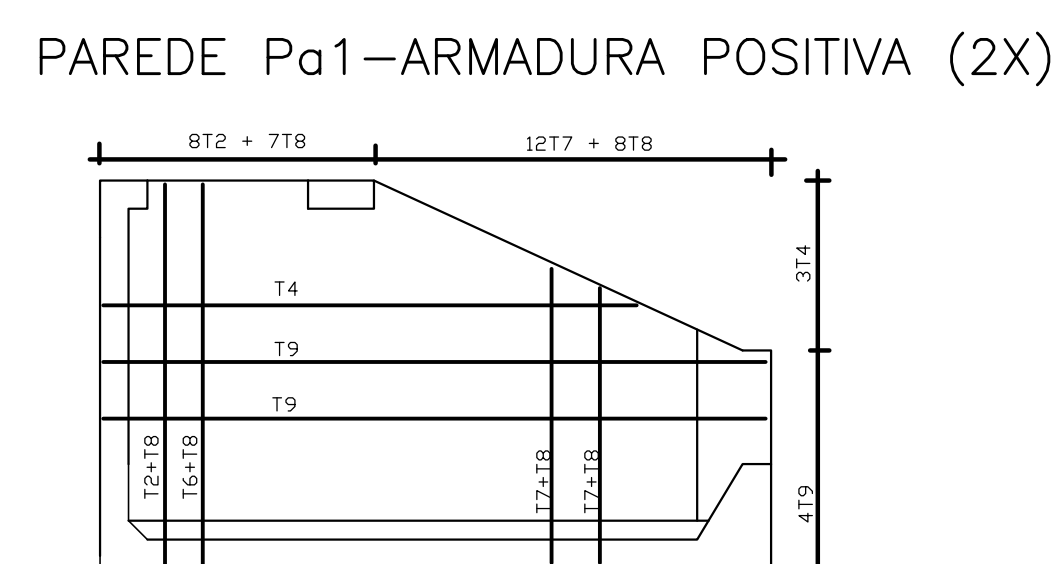
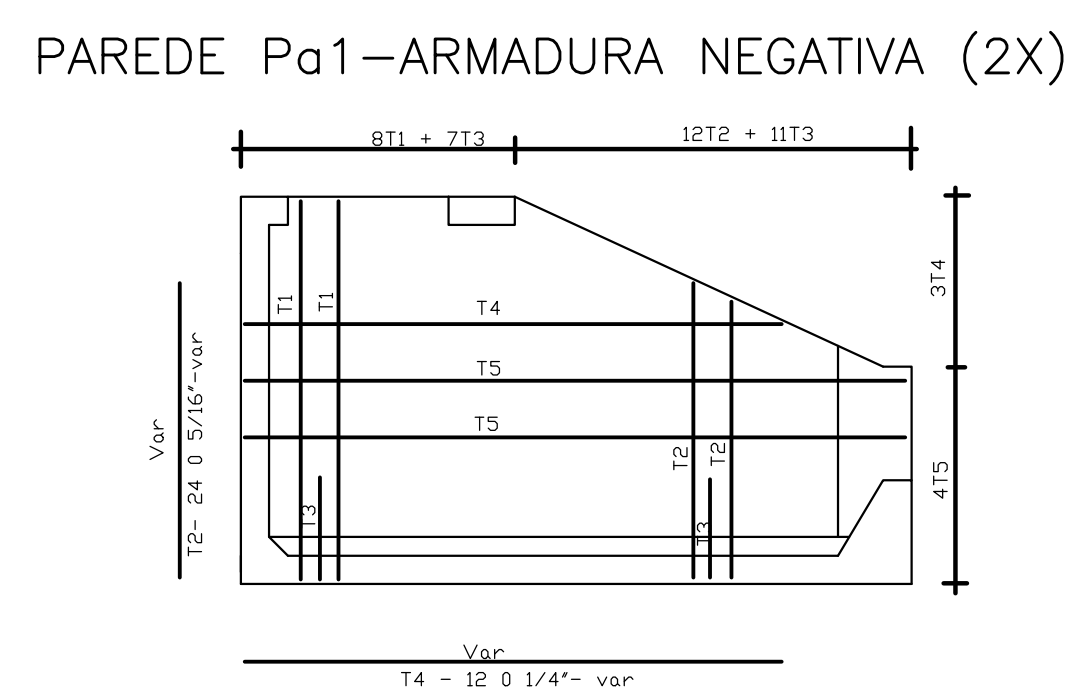
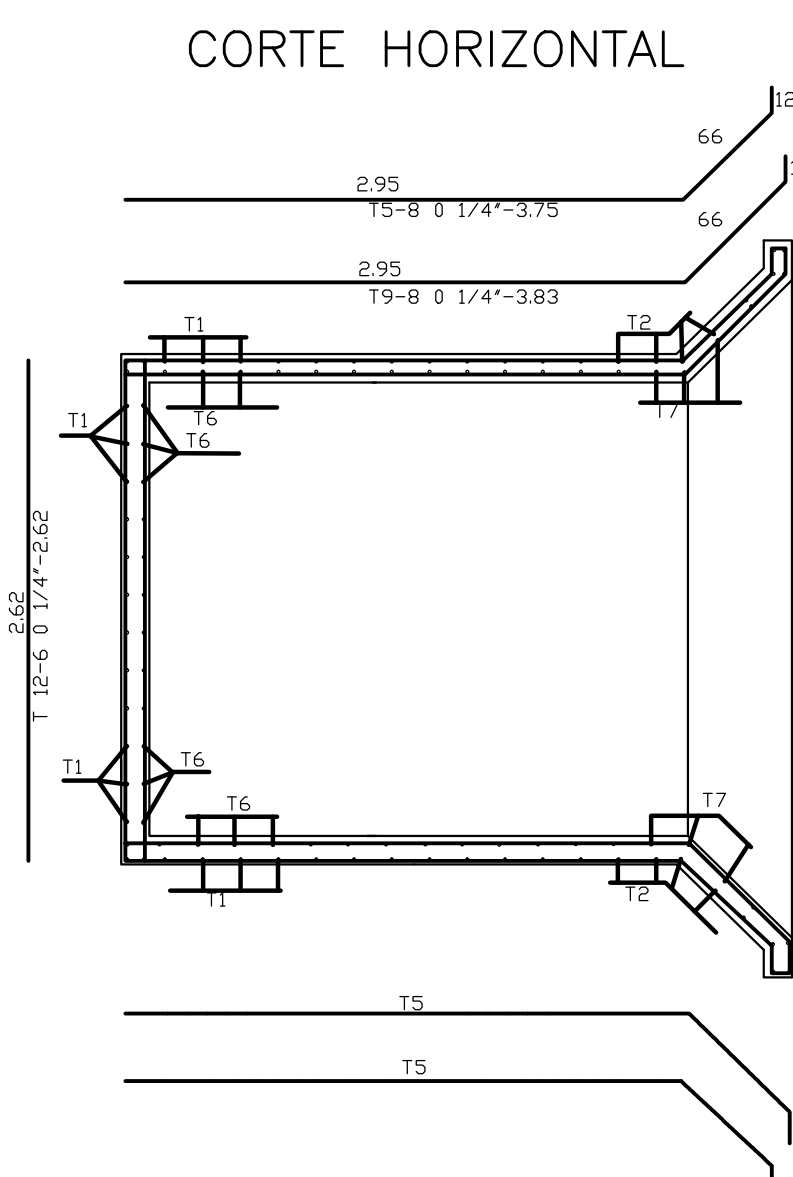
## DETALHE

### DISSIPADOR ENERGIA - 10 DEGRAUS

S/ ESCALA



TIPO	Ø (pol.)	QUANT.	COMPRIMENTO UNITÁRIO (cm)	COMPRIMENTO TOTAL (m)
1	5/16"	22	140	30,80
2	5/16"	24	VARIÁVEL	28,60
3	5/16"	44	152	58,10
4	1/2"	12	VARIÁVEL	26,40
5	1/2"	8	373	29,90
6	1/2"	22	115	25,30
7	1/2"	24	VARIÁVEL	28,60
8	1/2"	42	35	14,70
9	1/2"	8	383	30,70
10	5/16"	18	VARIÁVEL	18,00
11	5/16"	3	VARIÁVEL	4,30
12	1/2"	20	262	49,50
13	1/2"	16	VARIÁVEL	13,60
14	1/2"	12	VARIÁVEL	7,20
15	5/16"	23	262	60,30
16	5/16"	5	VARIÁVEL	1,90
17	1/2"	14	455	63,70
18	1/2"	8	VARIÁVEL	10,50
19	5/16"	19	295	56,10
20	1/2"	8	VARIÁVEL	26,40
21	5/16"	8	147	11,80
22	1/2"	8	80	30,40
23	1/2"	5	450	22,50
24	1/2"	14	65	9,10
25	3/8"	7	288	20,00
26	1/2"	14	78	10,70
27	1/2"	14	250	35,00
28	3/8"	64	VARIÁVEL	99,20



RESUMO DO AÇO - CA-50			
Ø (pol)	COMPRIMENTO TOTAL (m)	PESOS	
		UNIT. (kg/m)	TOTAL (kg)
1/4"	449,20	0,250	113,00
5/16"	292,00	0,390	114,00
3/8"	125,20	0,560	70,00
1/2"	23,70	0,990	24,00
TOTAL (kg)			321,00