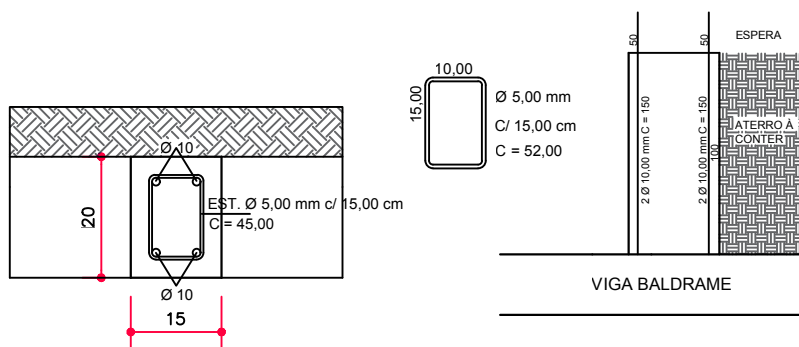
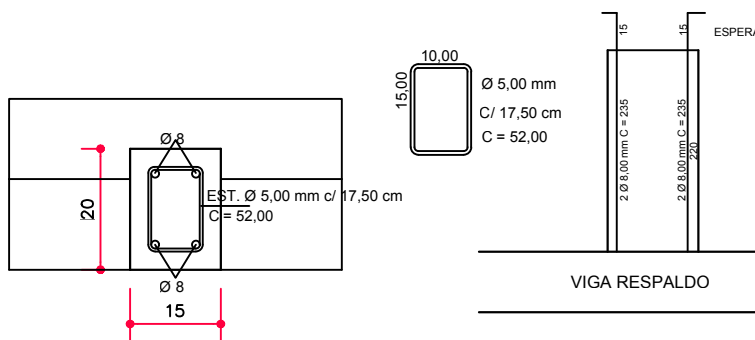


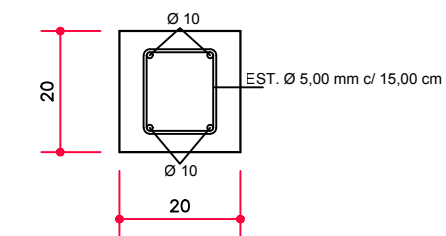
VISTA FRONTAL
SEM ESCALA



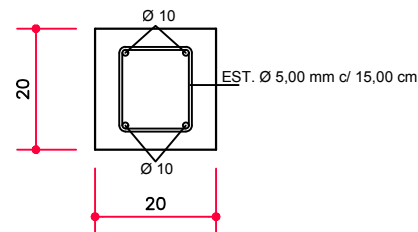
DETALHE PILAR ARRIMO
SEM ESCALA



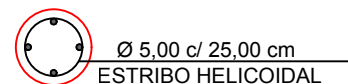
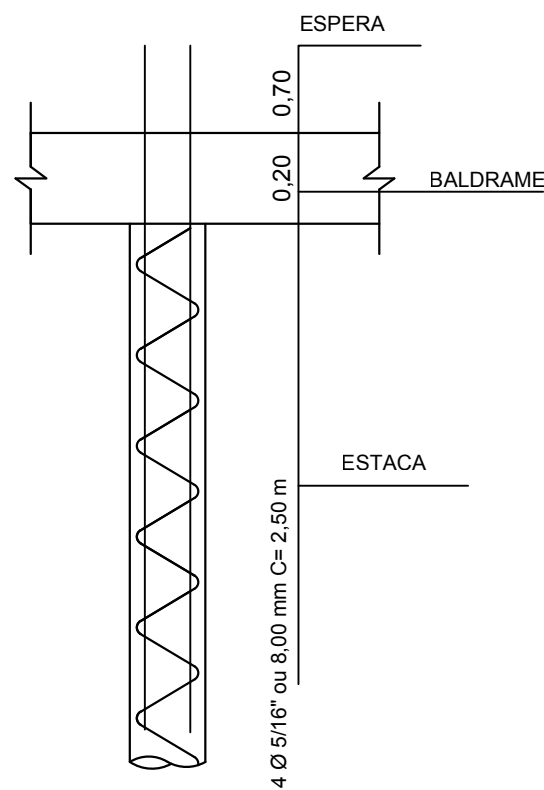
DETALHE PILAR MURO DIVISA
SEM ESCALA



VIGA BALDRAME
SEM ESCALA



VIGA RESPALDO
SEM ESCALA



DETALHE ESTACA Ø25mm
SEM ESCALA



PROJETO ESTRUTURAL:
MURO DE ARRIMO
HOSPITAL JOAO DE CAIRES

FOLHA:
01/01

ESCALA:
INDICADA

LOCAL:
PRADO FERREIRA-PR

DATA:
07/2019

PREFEITURA MUNICIPAL DE PRADO FERREIRA
CNPJ: 01.613.136/0001-30

Arquiteta Sâmela Machado
CAU Nº 200256-6