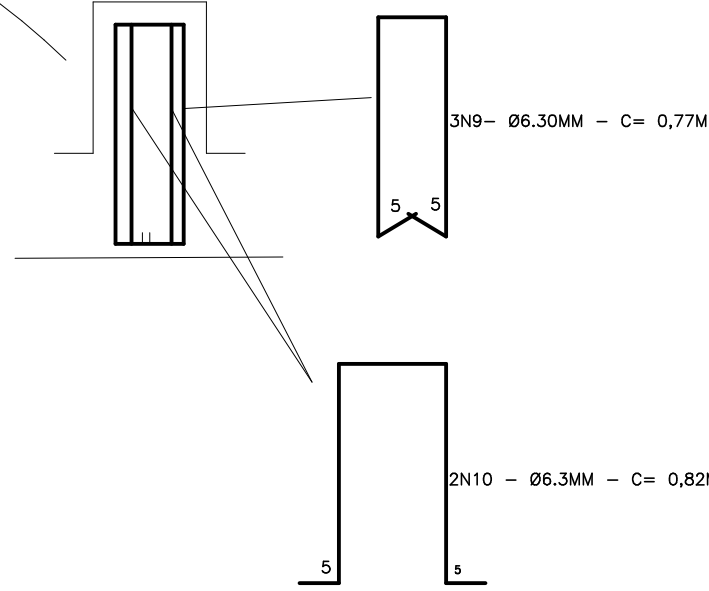
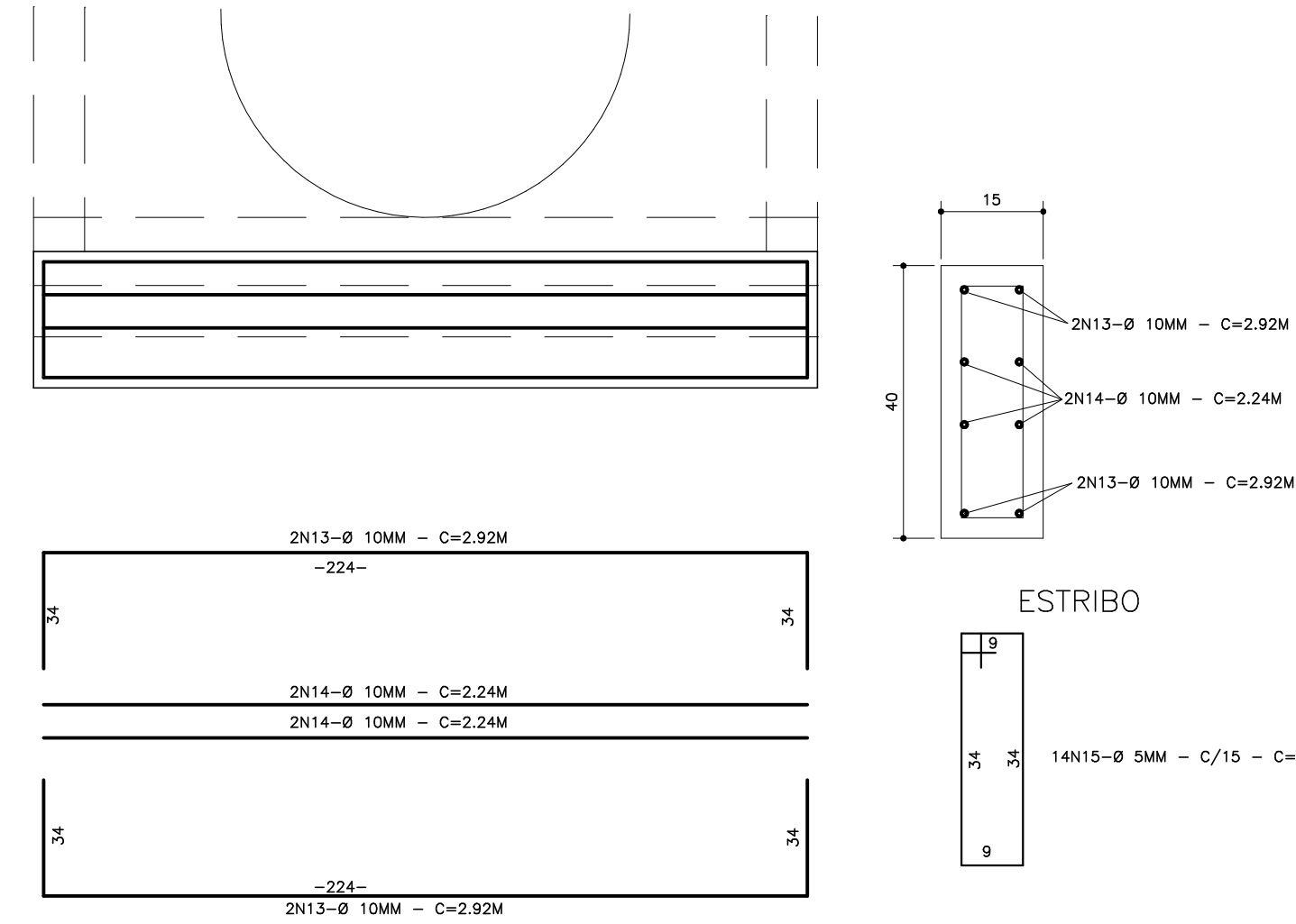


CORTE BB

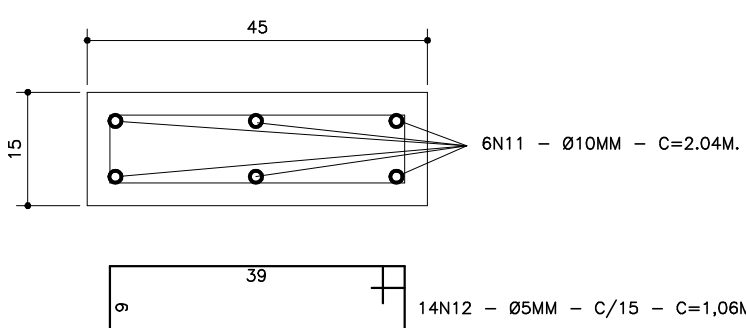
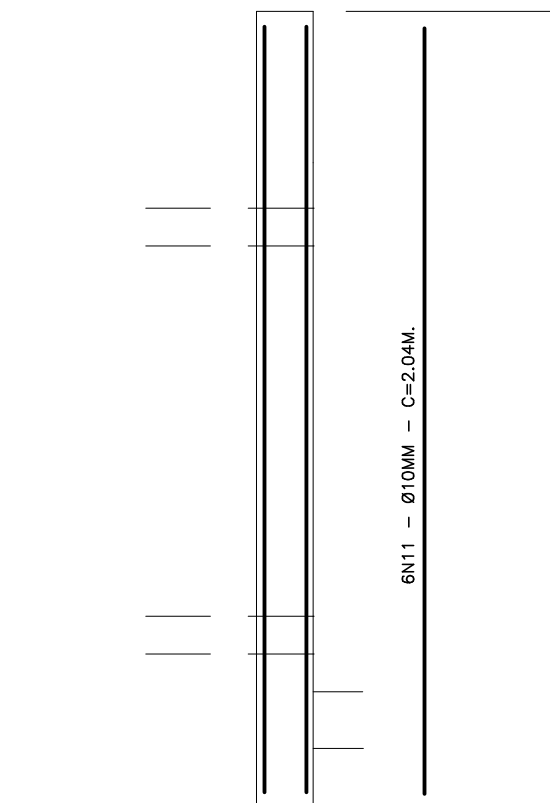


V1 15x40

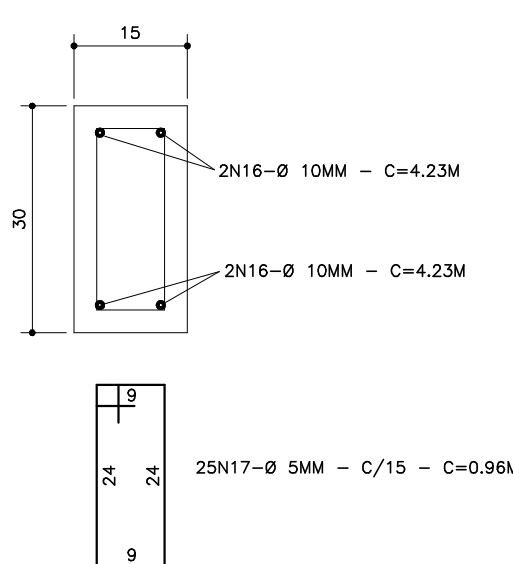
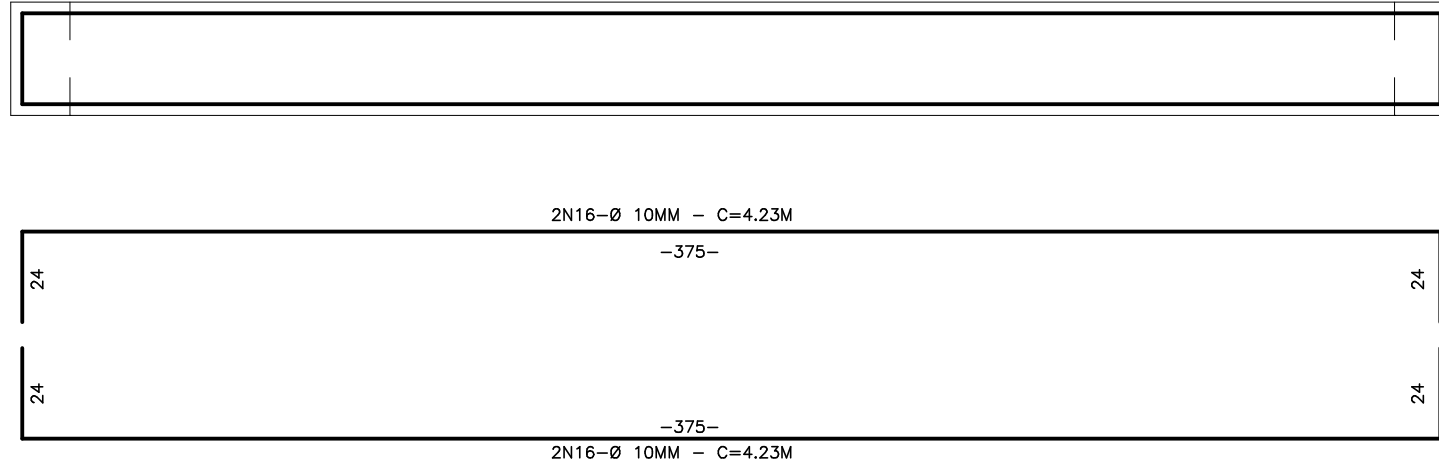


ESTRIBO

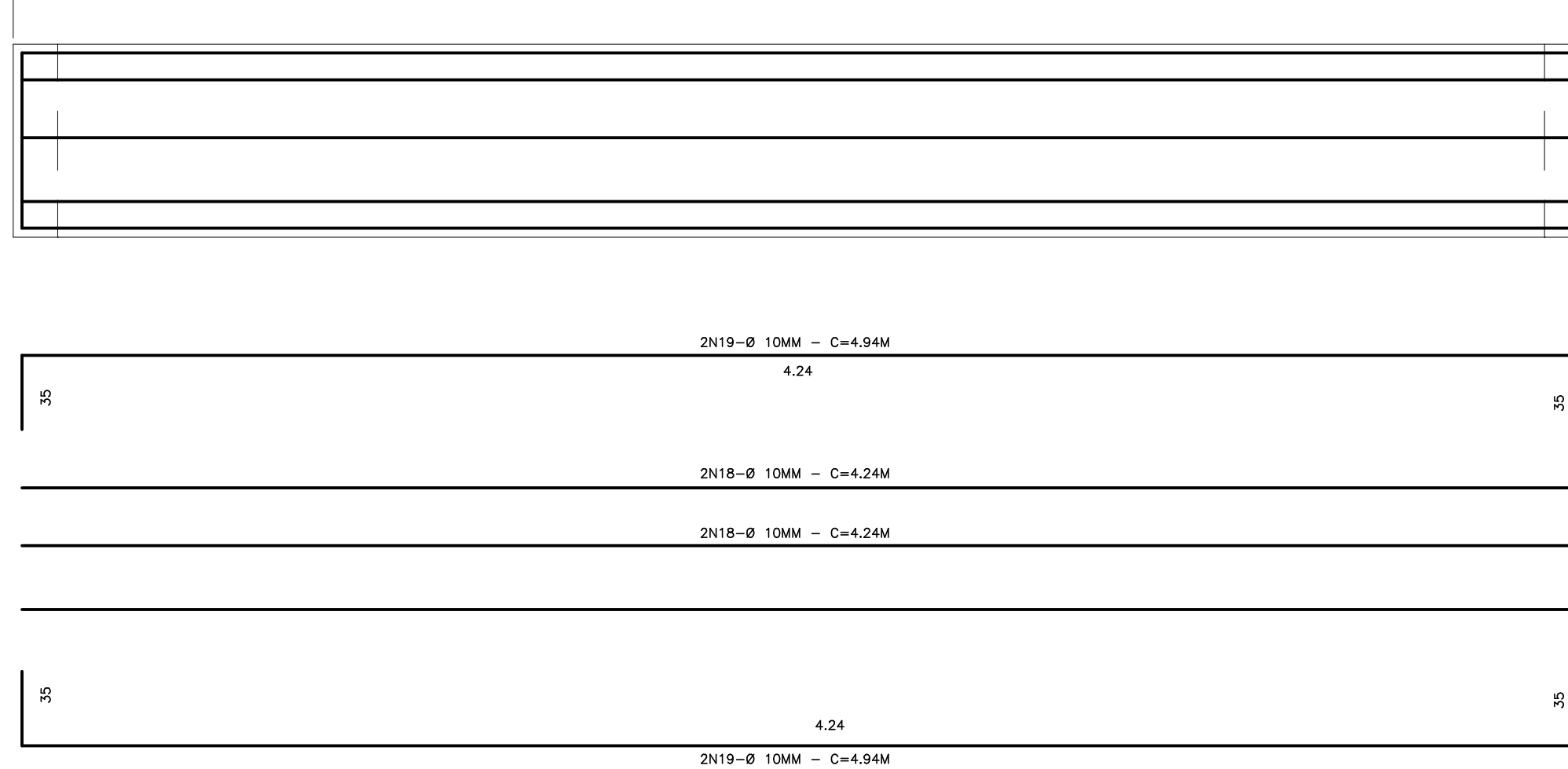
PILAR P1 (2X)



V2 15x30

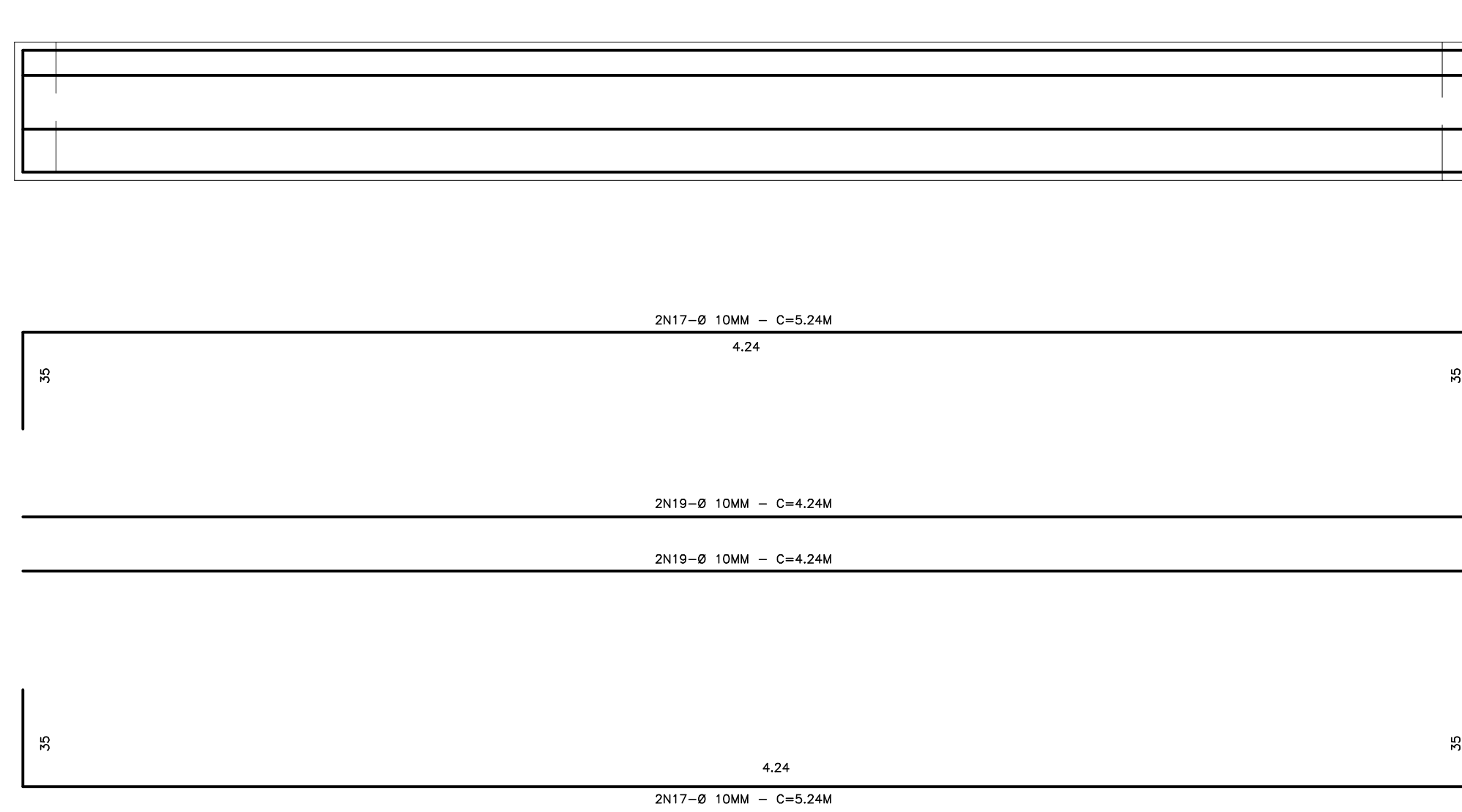


V3 15x65



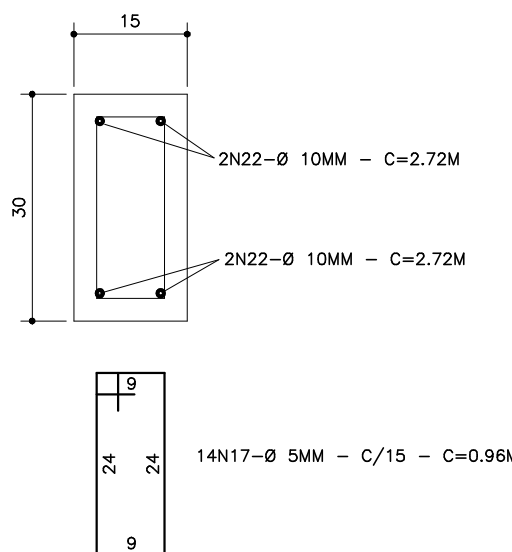
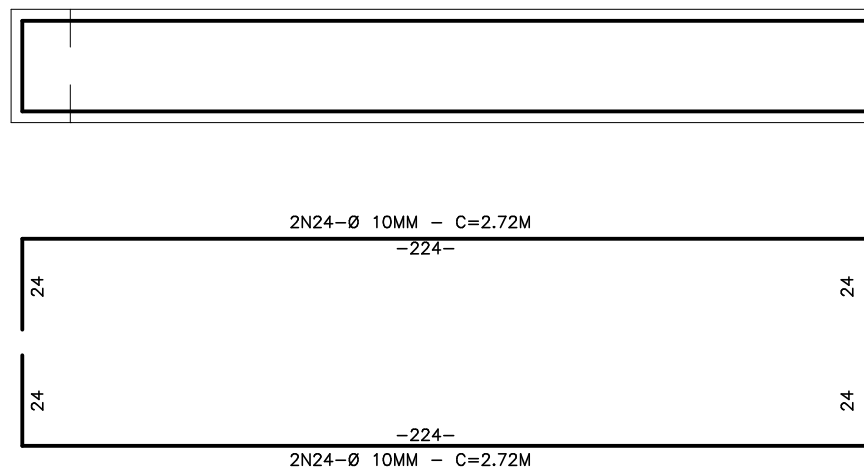
ESTRIBO

V4 15x30

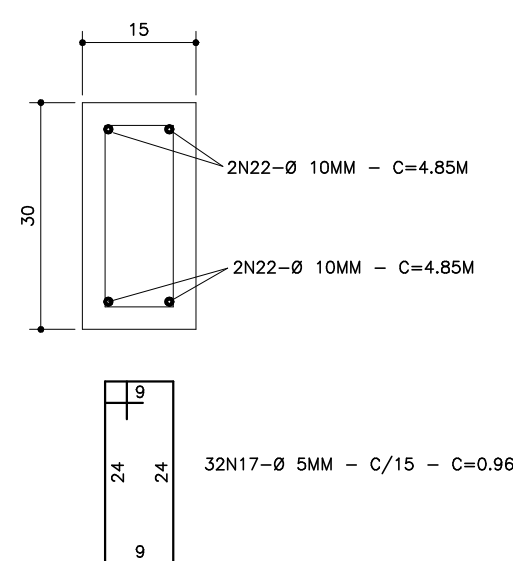
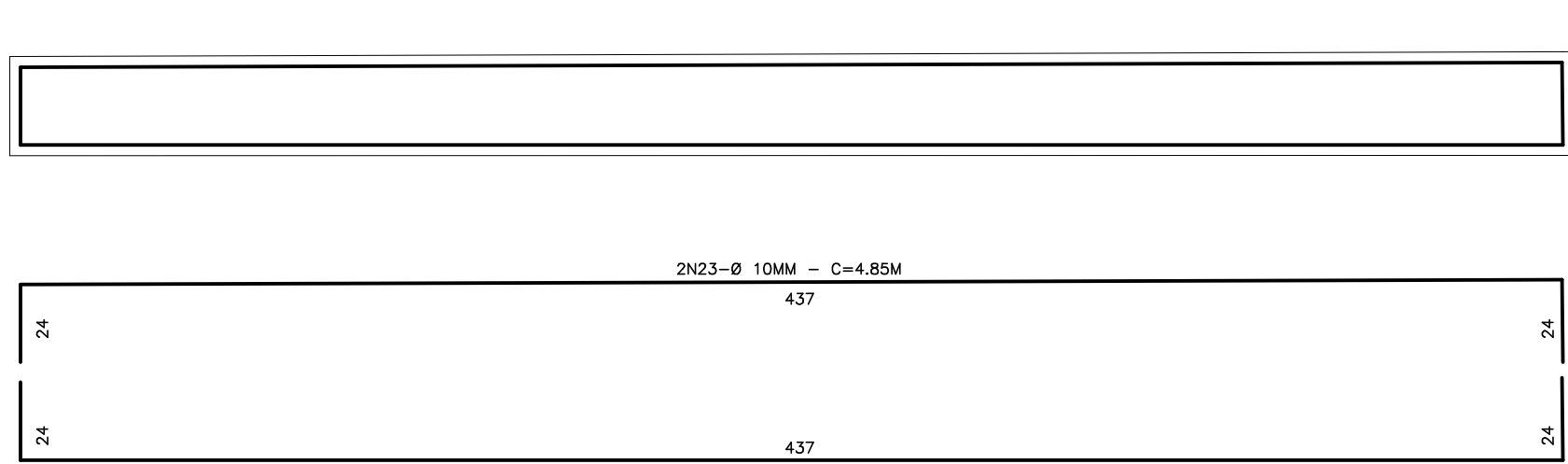


ESTRIBO

V6 15x30



V5 15x30



RESUMO DE MATERIAIS

MATERIAL/SERVIÇO	QUANTIDADE
ESTACA Ø 0,25M	75,00 TON
AÇO CASO (Kg)	700,31
CONCRETO MAGRO (M3)	0,71
CONCRETO FCK 20 MPA (M3)	9,36
CAIXARIA (M2)	47,68

AUTENTICAÇÕES

MUNICÍPIO DE SÃO JORGE DO IVAI – PARANÁ

Projeto de Rede de Galerias de Águas Pluviais

03 03

Rua da Saudade – Estrada que dá Acesso ao Cemitério Municipal Emissário

Viga de apoio e Caixa de dissipação Ø 1,00m

PROPRIETÁRIO

MUNICÍPIO DE SÃO JORGE DO IVAI

PROJETO

RESP. TÉCNICO: HELIO BORGES MONTEIRO LIMA
PROJETO: 03
REVISÃO: 01