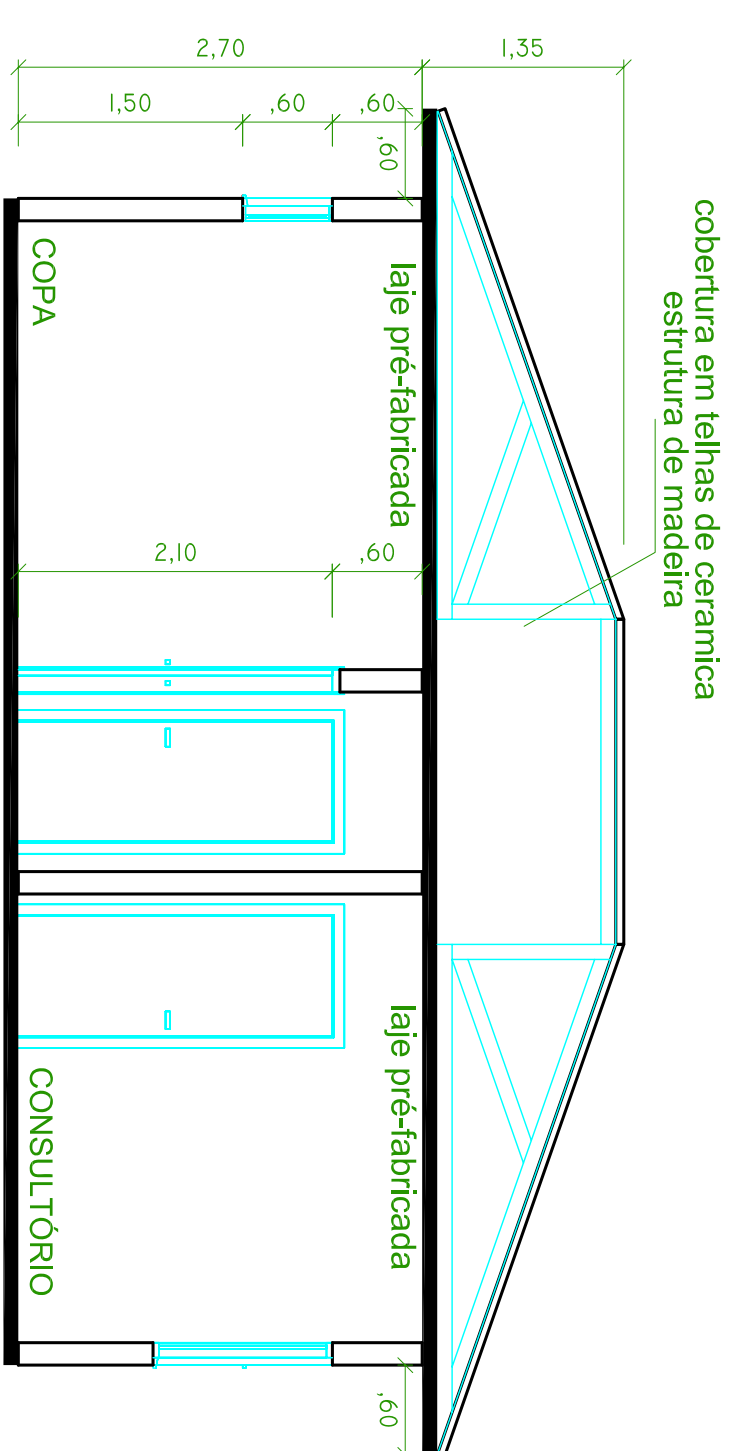
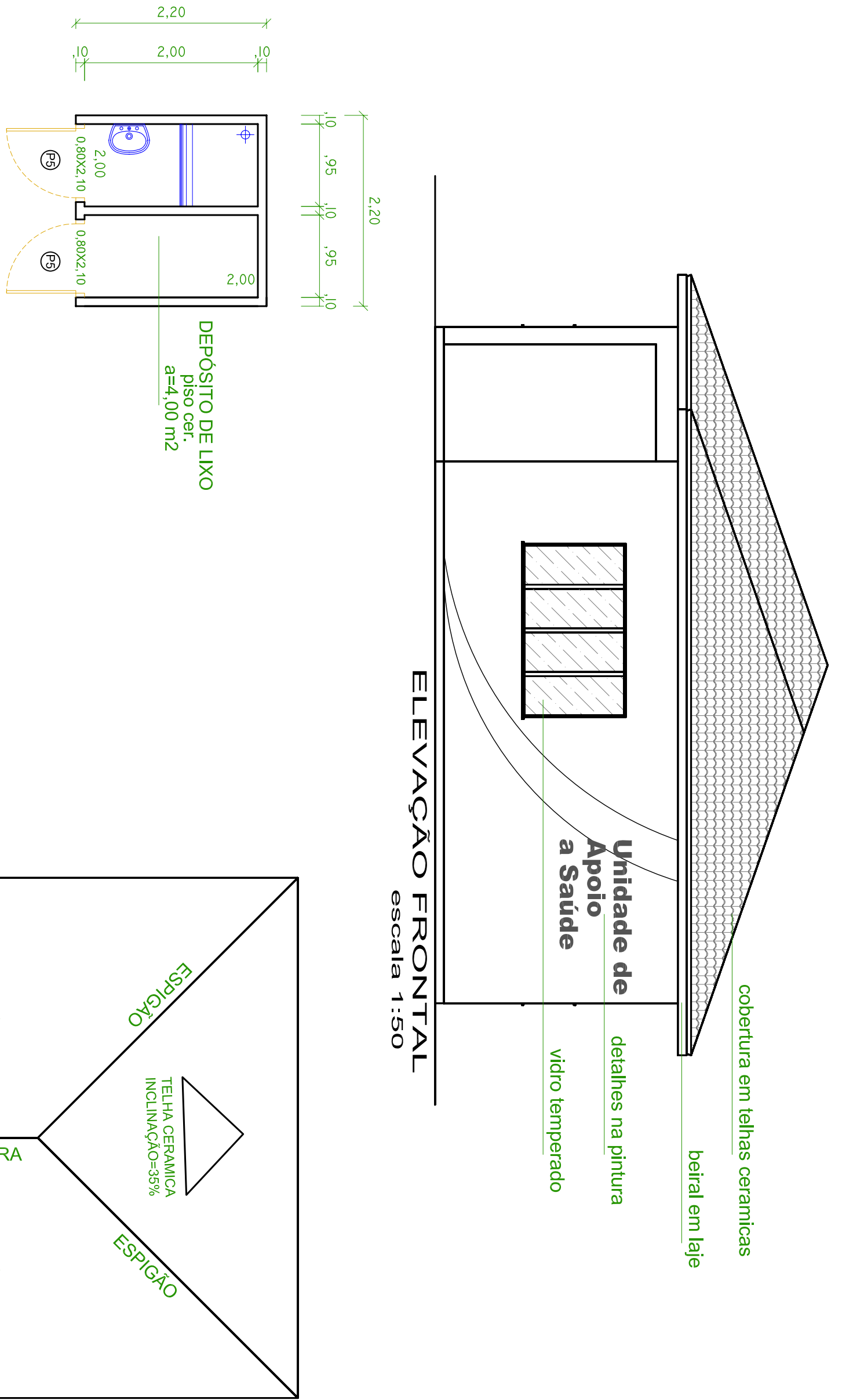


PLANTA
escala 1:50

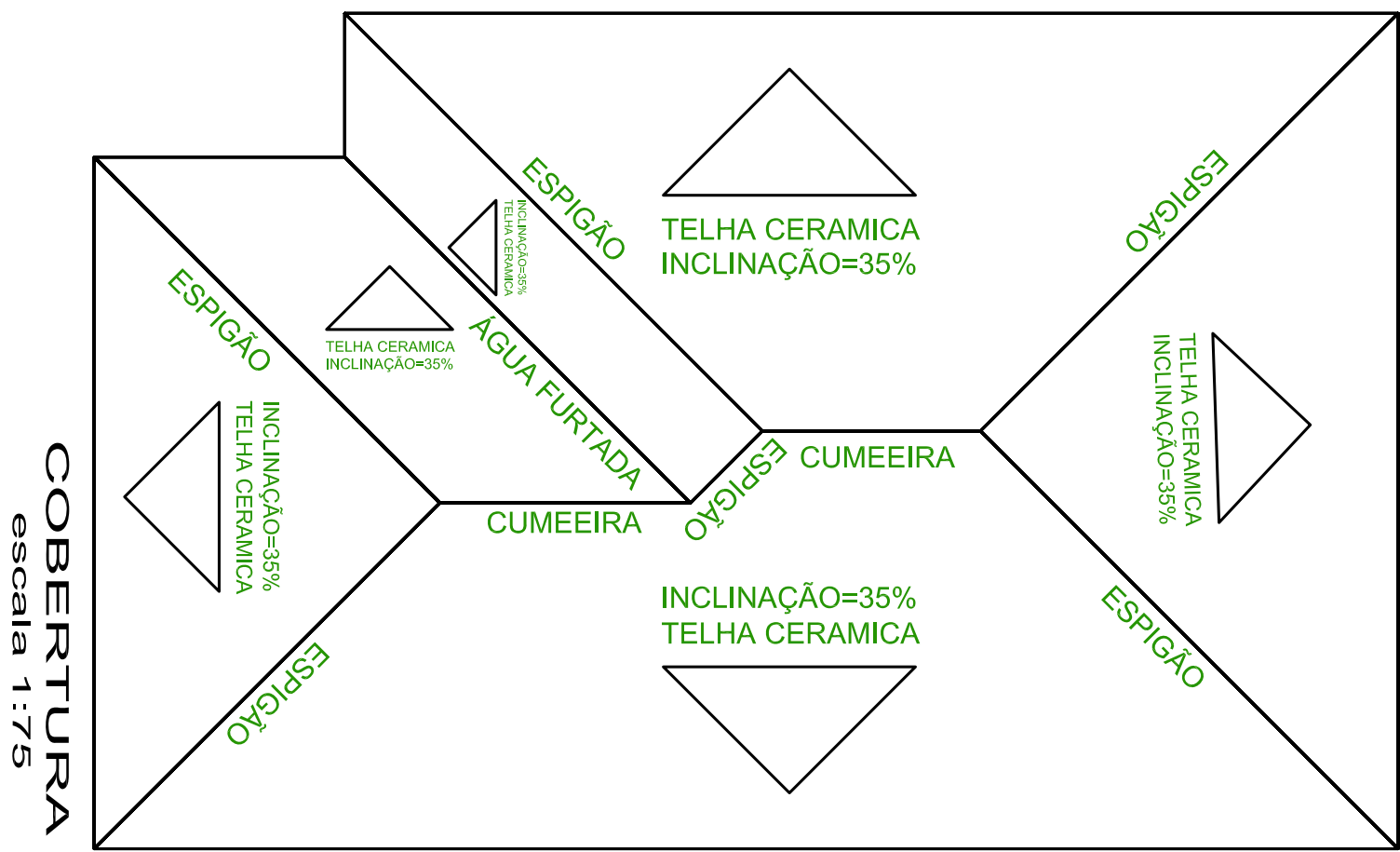


CORTE AA
escala 1:50

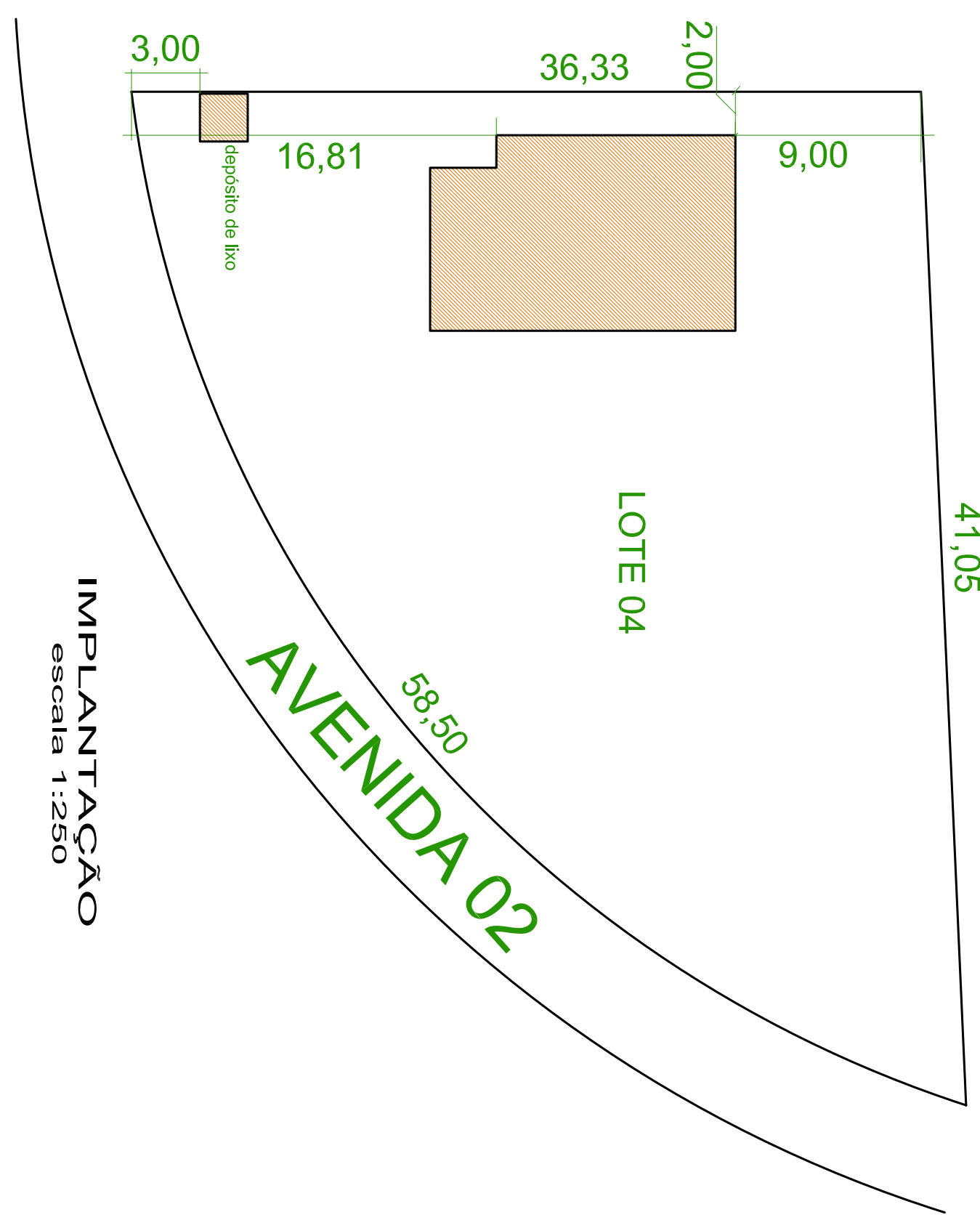


ELEVÇÃO FRONTAL
escala 1:50

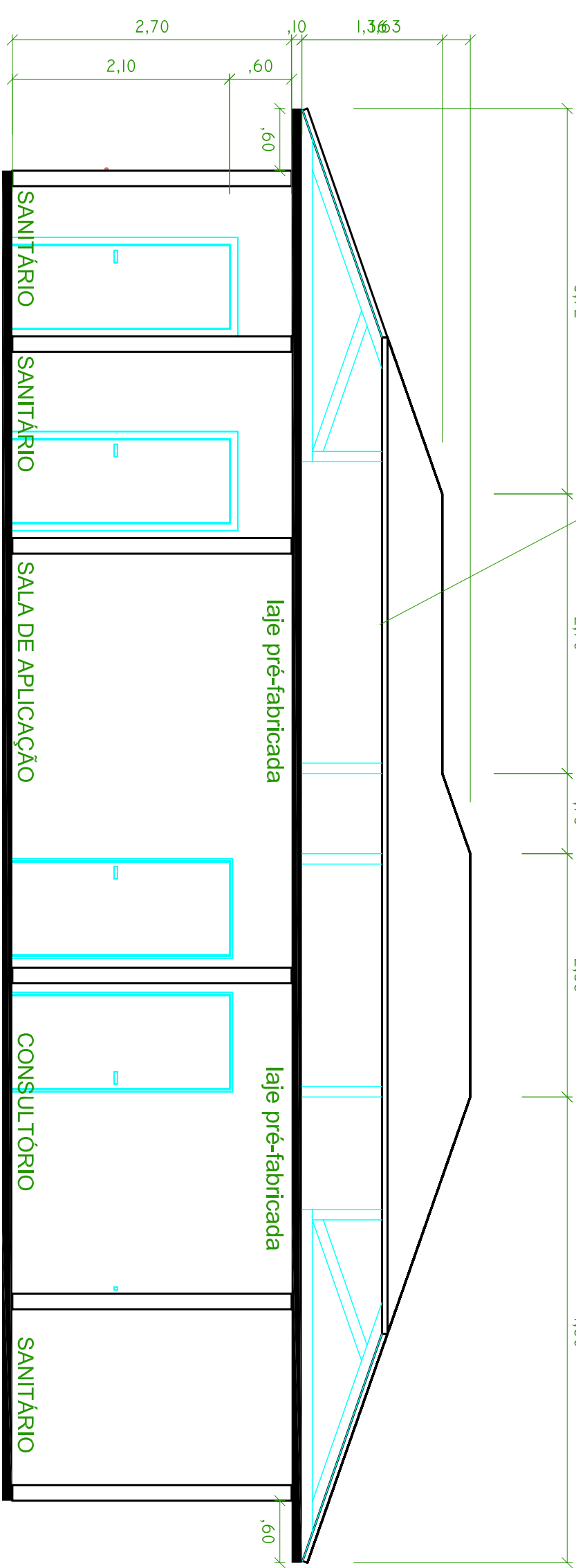
Legendas			
PAREDE REVESTIDA CERAMICA ATÉ 1,80m ALTURA			
Quadro de Esquadrias			
Portas		Janelas	
Código	Medida	Tipo	Material
P1	0,80 x 2,10	Abir	Madeira
P2	0,70 x 2,10	Abir	Madeira
P5	0,80 x 2,10	Abir	Ferro e vidro
P10	0,90 x 2,10	Abir	Madeira
P13	1,20 x 2,10	Correr	Vidro Temperado
Código	Medida	Tipo	Material
J2	2,00 x 1,20	Correr	Vidro temperado
J3	0,60 x 0,80	Máximo Ar	Vidro temperado
J7	1,50 x 1,20	Correr	Vidro Temperado



COBERTURA
escala 1:75

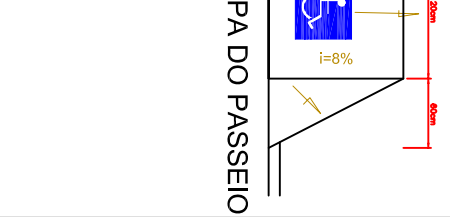
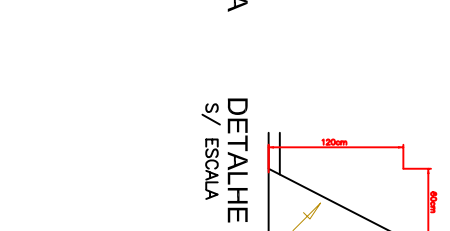
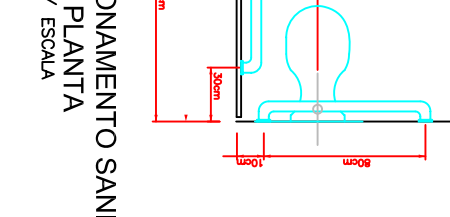
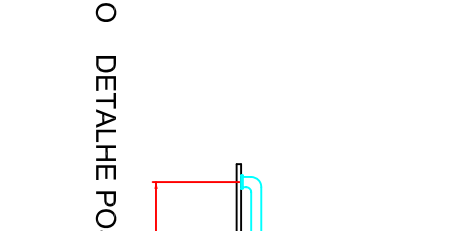
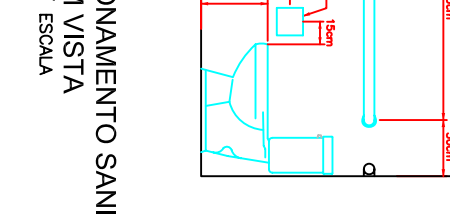
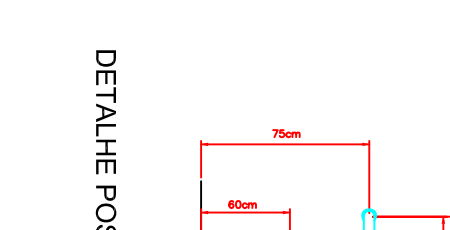
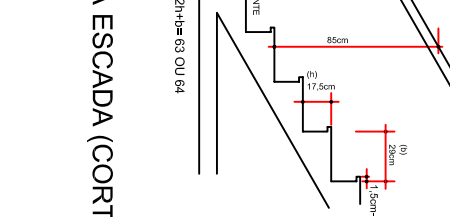
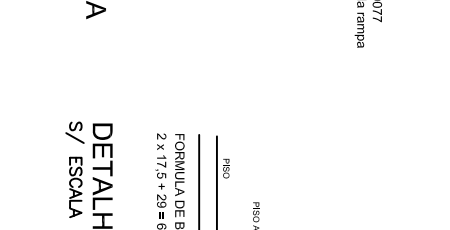
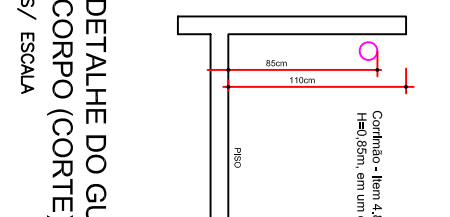
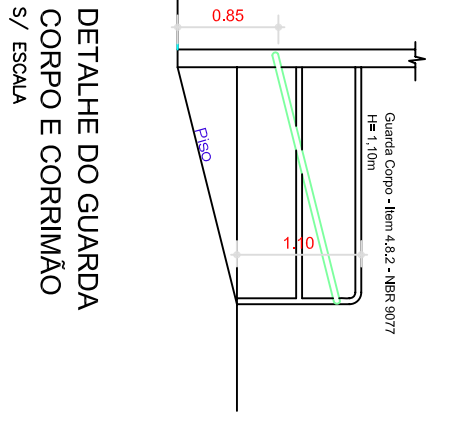
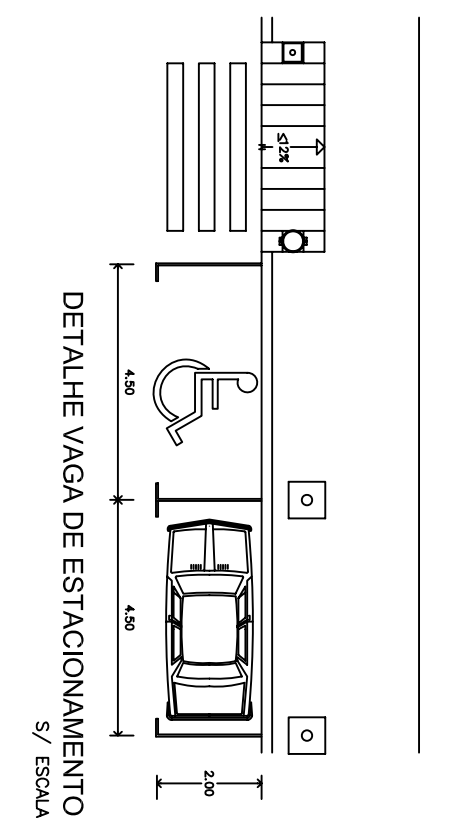


IMPLANTAÇÃO
escala 1:250



CORTE BB
escala 1:50

DETALHES DE ACESSIBILIDADE
sem escala



APROVAÇÃO

_____, está aqui nos lugares e Selo - 1 Set 7/13

TORRES AVELINO arquitetura • engenharia

www.torresavelino.com.br

11 (011) 3852-1193 / 4471 8466-4470 / 4471 8477-1193 / 1
FRAUJOSE GONDO FILHO, 177 - CENTRO I
JABOTI - PR I

CONSTRUÇÃO DE UMA UNIDADE BÁSICA DE SAÚDE

PROJETO ARQUITETÔNICO

Proprietário: **FUNDO MUNICIPAL DE SAÚDE DE FIGUEIRA**

Autor do Projeto: **CARLOS AVELINO DA SILVA**

Secretaria: **Mari Ysabel Figueira**

Administrador: **VALDIR GARCIA**

Referências: **PLANTA, CORTE AA, CORTE BB, COBERTURA, ELEVÇÃO FRONTAL, IMPLANTAÇÃO, QUADRO DE ESQUADRIAS, DETALHES DE ACESSIBILIDADE**

Endereço: **AVENIDA 02 - LOTE 4 - RESIDENCIAL VALE VERDE - FIGUEIRA-PR**

Área: **39,95m²**

Escala: **INDICADA**