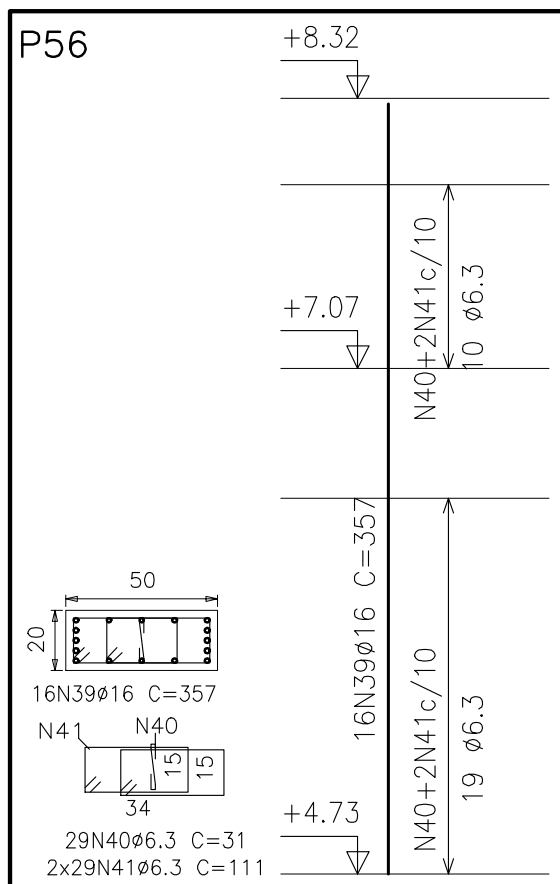
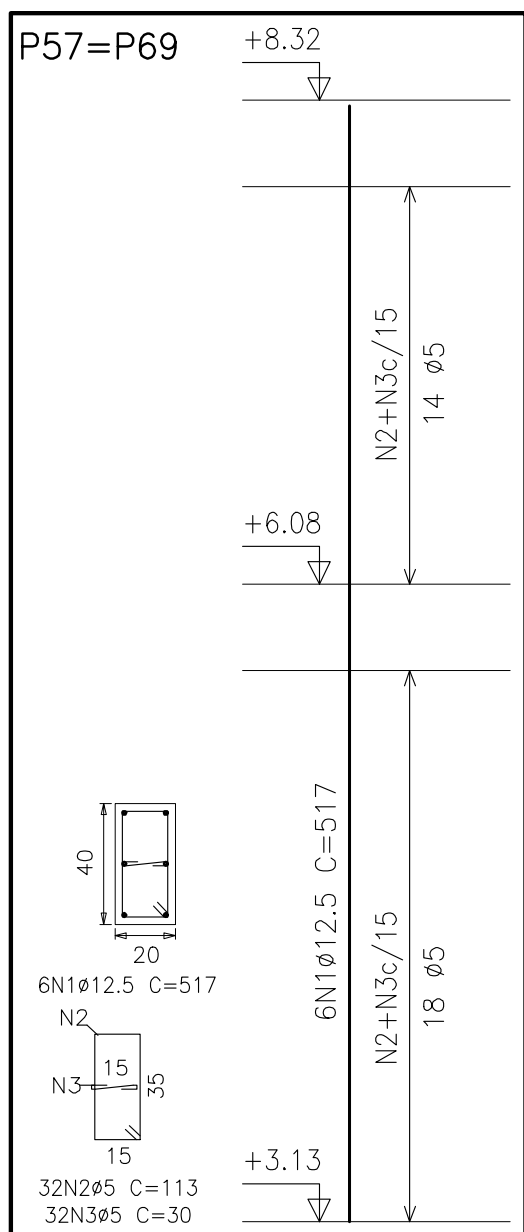
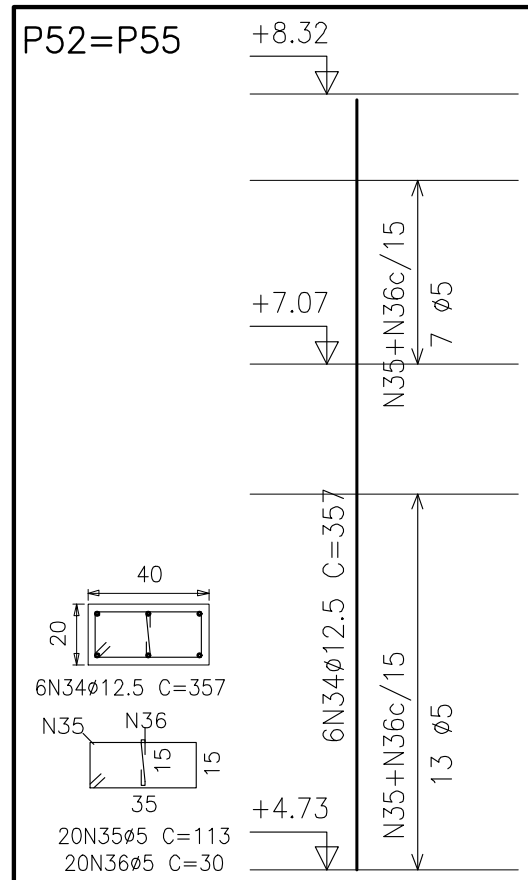
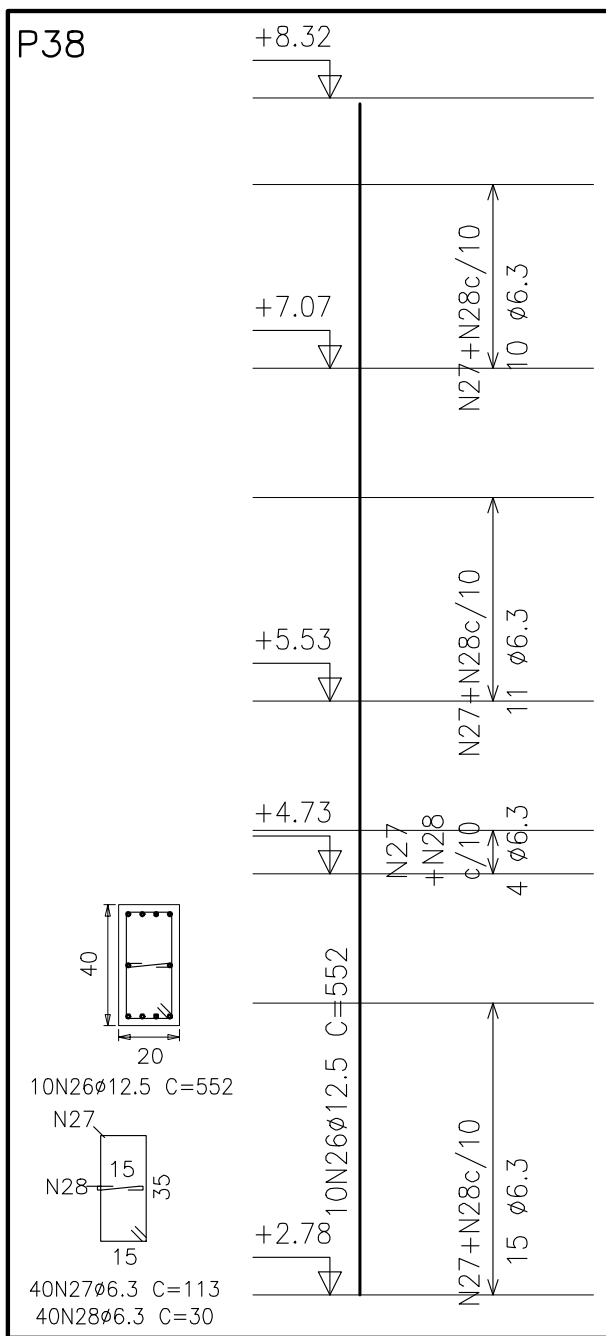
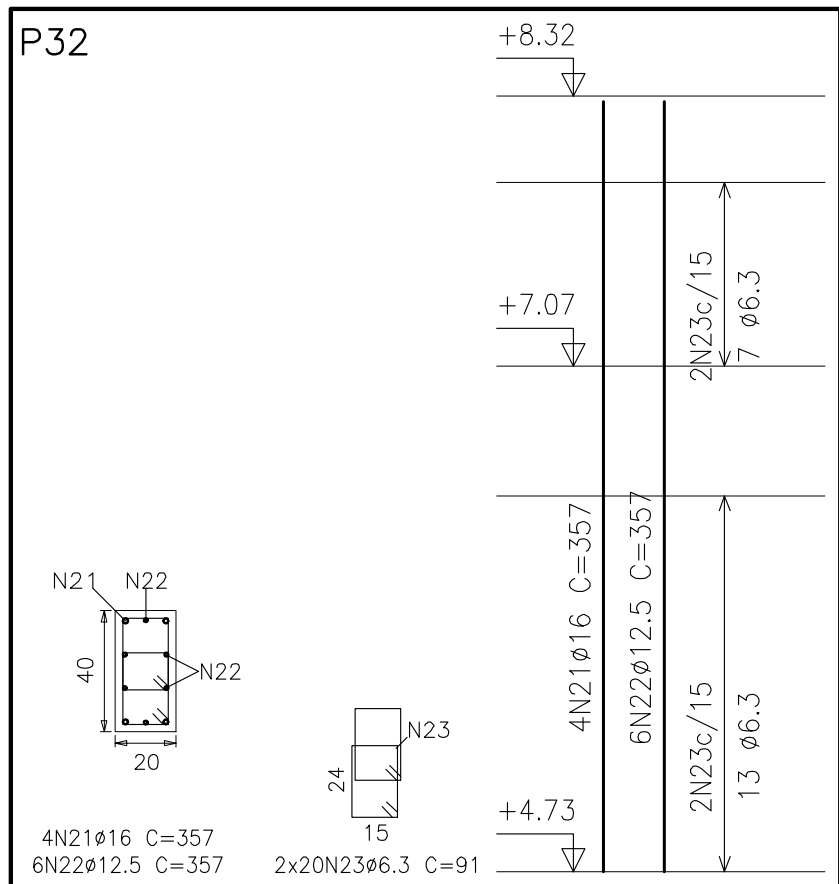
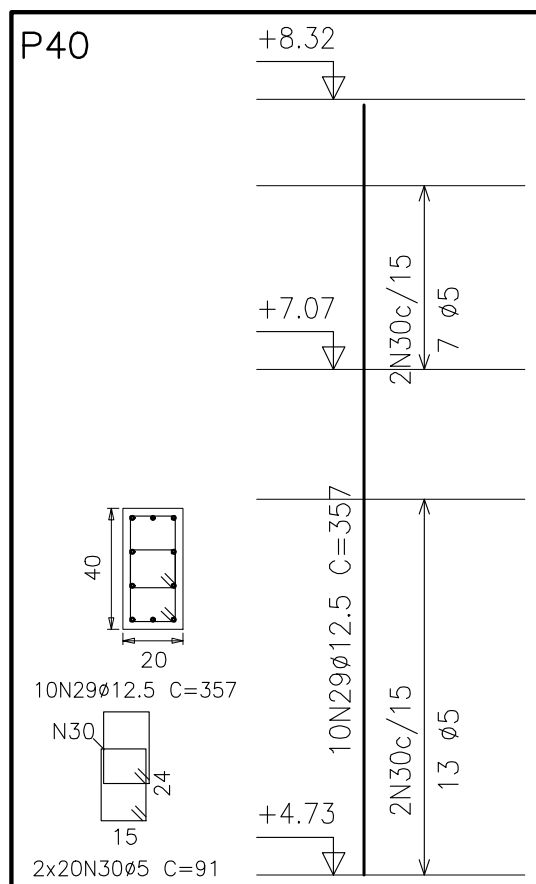
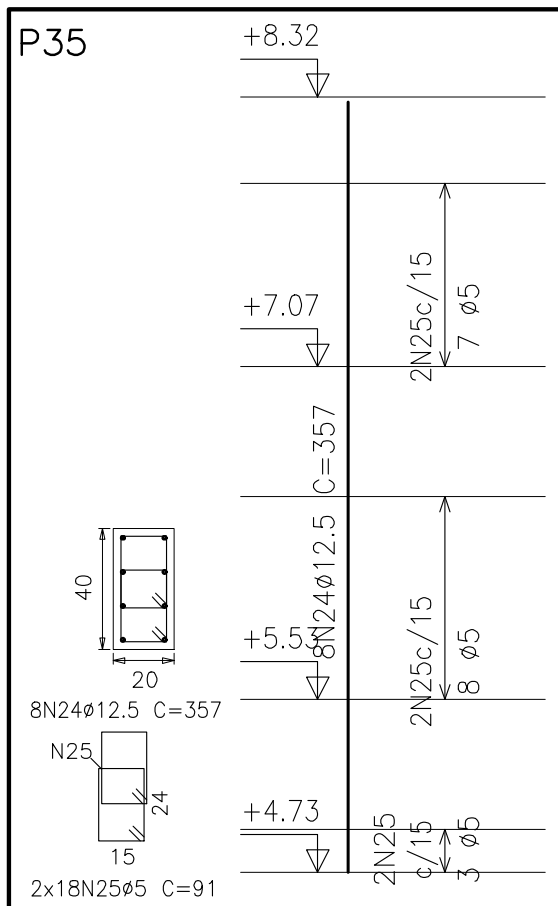
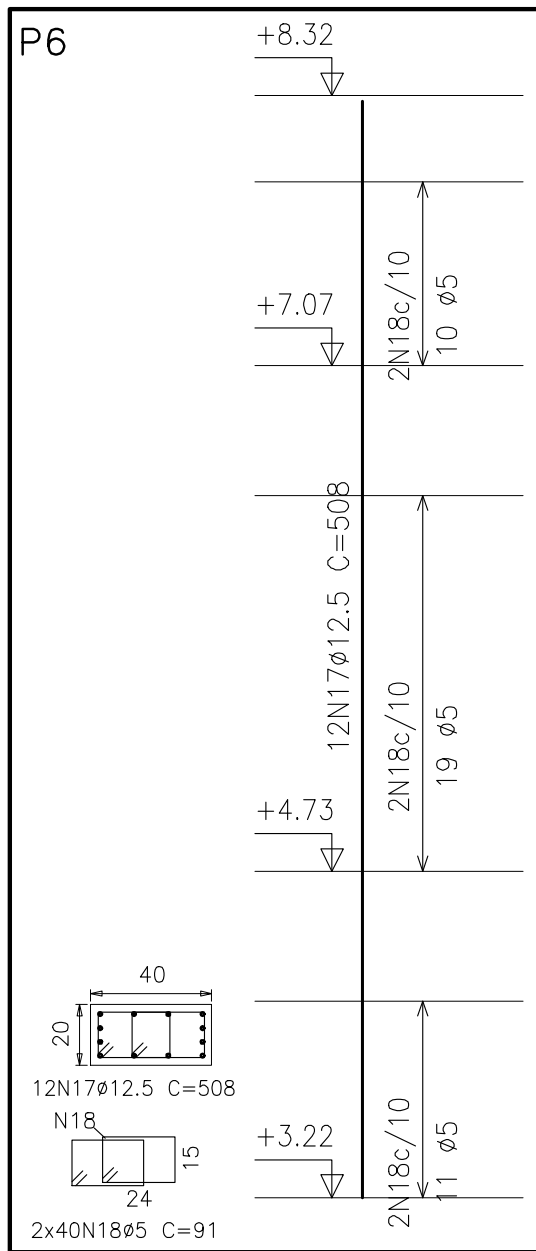
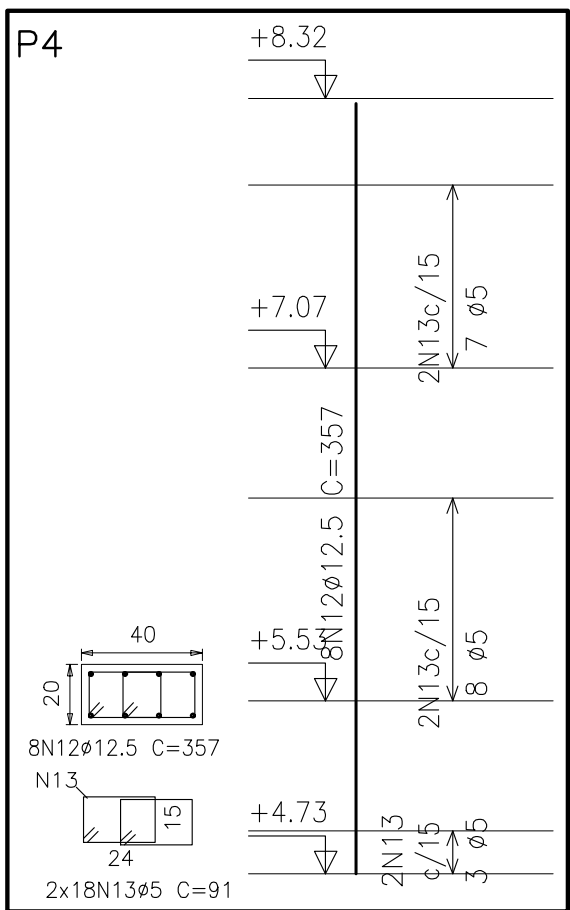
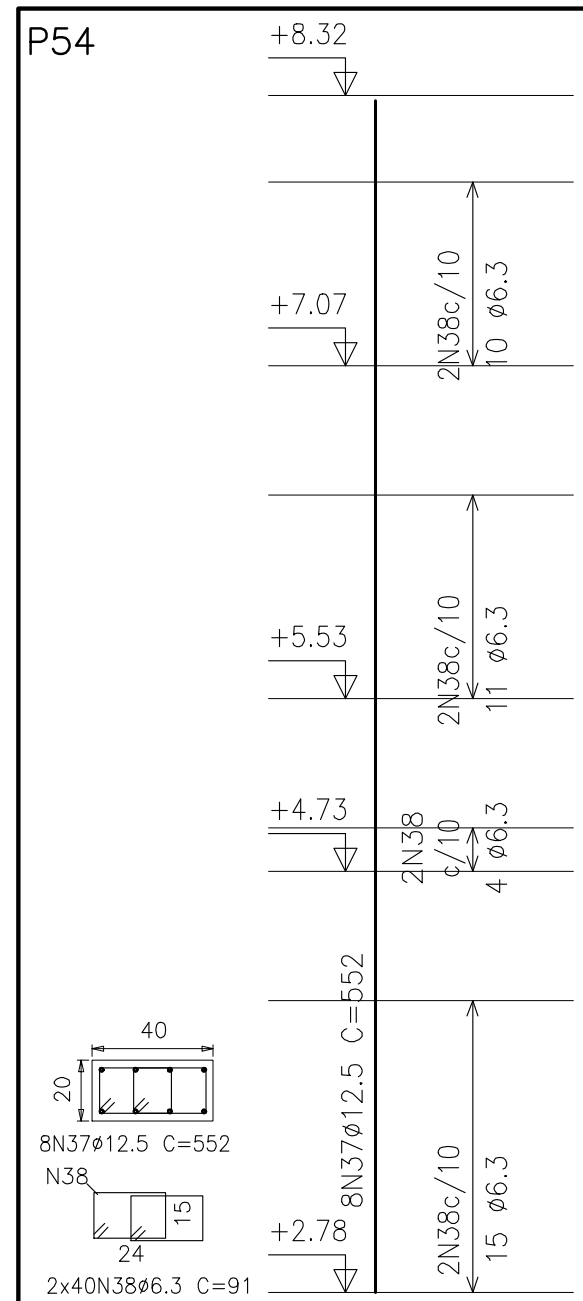
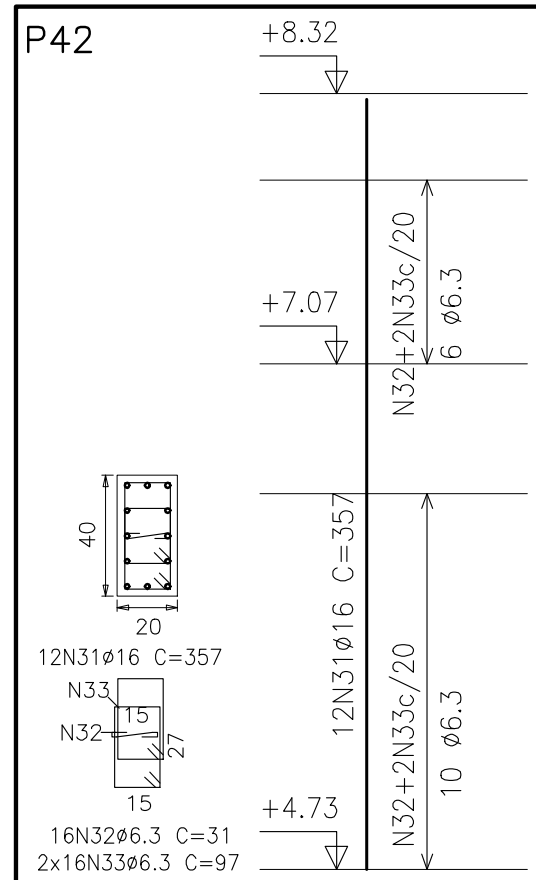
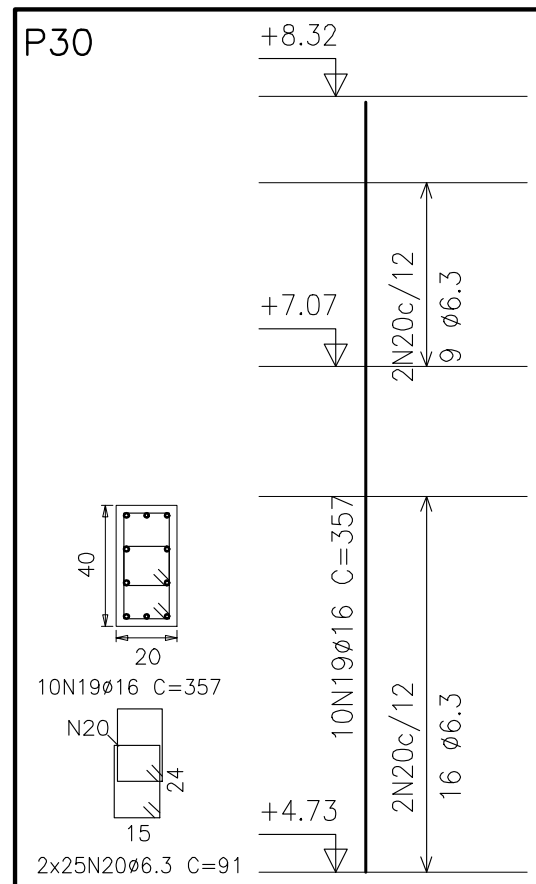
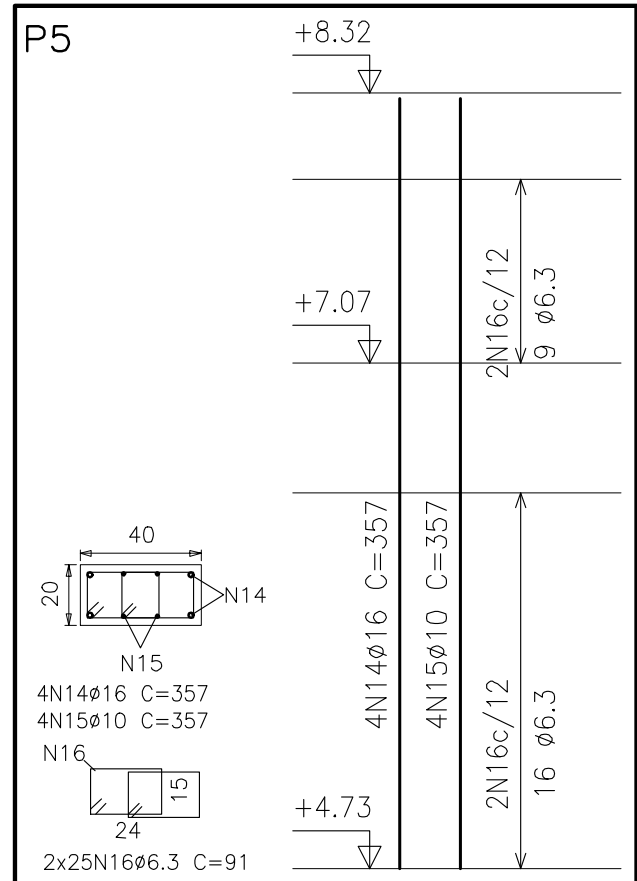
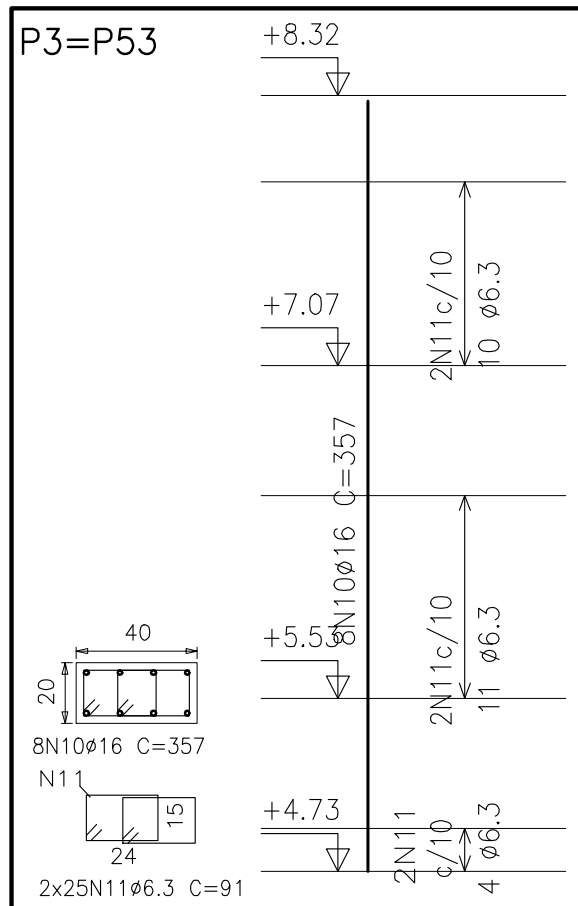
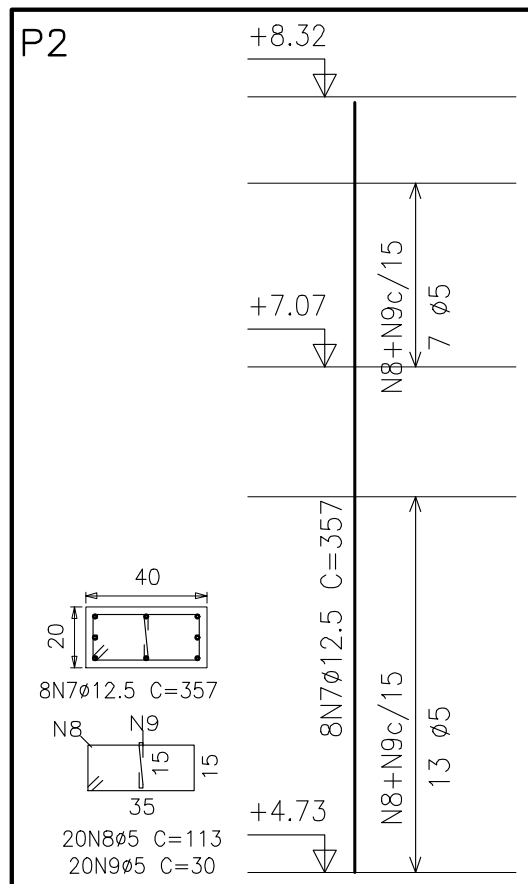


Resumo Aço Teto Pilares	Comp. total (m)	Peso (kg)	Total
CA-50-A Ø6.3	4197.6	1038	
Ø10	77.8	49	
Ø12.5	563.1	553	
Ø16	221.3	348	
Ø20	937.4	2318	4306
CA-60-B Ø5	641.6	101	101
Total			4407



Elemento	Pos.	Diam.	Q.	Dob. (cm)	Ret. (cm)	Dob. (cm)	Comp. (cm)	Total (cm)	CA-50-A (kg)	CA-60-B (kg)
P57=P69	1	Ø12.5	6							
	2	Ø5	32	113	30	517	113	3102	30.4	5.7
	3	Ø5	32				30	960		1.5
Total:									30.4	7.2
(x2):									60.8	14.4

Elemento	Pos.	Diam.	Q.	Dob. (cm)	Ret. (cm)	Dob. (cm)	Comp. (cm)	Total (cm)	CA-50-A (kg)	CA-60-B (kg)
P1=P51	4	Ø10	6	357					13.5	
	5	Ø5	25	112				2800		4.4
	6	Ø5	25	29				725		1.1
Total:									13.5	5.5
(x2):									27.0	11.0
P2	7	Ø12.5	8	357				357	28.0	
	8	Ø5	20	113				113		3.5
	9	Ø5	20	30				30		0.9
Total:									28.0	4.4
P3=P53	10	Ø16	8	357				357	44.8	
	11	Ø6.3	50	91				91	11.3	
Total:									56.1	
(x2):									112.2	
P4	12	Ø12.5	8	357				357	28.0	
	13	Ø5	36	91				91		5.1
Total:									28.0	5.1
P5	14	Ø16	4	357				357	1428	22.4
	15	Ø10	4	357				357	1428	9.0
	16	Ø6.3	50	91				91	4550	11.3
Total:									42.7	
P6	17	Ø12.5	12	508				508	6096	59.8
	18	Ø5	80	91				91	7280	11.4
Total:									59.8	11.4
P30	19	Ø16	10	357				357	3570	56.0
	20	Ø6.3	50	91				91	4550	11.3
Total:									67.3	
P32	21	Ø16	4	357				357	1428	22.4
	22	Ø12.5	6	357				357	2142	21.0
	23	Ø6.3	40	91				91	3640	9.0
Total:									52.4	
P35	24	Ø12.5	8	357				357	2856	28.0
	25	Ø5	36	91				91	3276	
Total:									28.0	5.1
P38	26	Ø12.5	10	552				552	5520	54.2
	27	Ø6.3	40	113				113	4520	11.2
	28	Ø6.3	40	30				30	1200	3.0
Total:									68.4	
P40	29	Ø12.5	10	357				357	3570	35.0
	30	Ø5	40	91				91	3640	
Total:									35.0	5.7
P42	31	Ø16	12	357				357	4284	67.3
	32	Ø6.3	16	31				31	496	1.2
	33	Ø6.3	32	97				97	3104	7.7
Total:									76.2	
P52=P55	34	Ø12.5	6	357				357	2142	21.0
	35	Ø5	20	113				113	2260	
	36	Ø5	20	30				30	600	
Total:									21.0	4.4
(x2):									42.0	8.8
P54	37	Ø12.5	8	552				552	4416	43.3
	38	Ø6.3	80	91				91	7280	18.0
Total:									61.3	
P56	39	Ø16	16	357				357	5712	89.7
	40	Ø6.3	29	31				31	899	2.2
	41	Ø6.3	58	111				111	6438	15.9
Total:									107.8	
									Ø5:	0.0
									Ø6.3:	113.4
									Ø10:	36.0
									Ø12.5:	400.1
									Ø16:	347.4
									Total:	896.9
										65.9

## ARMADURAS DOS PILARES QUE TERMINAM EM TETO (01/02)

SEM ESCALA - VER DETALHE DE ESPERAS

FCK=30.0 MPa - FATOR H<sub>2</sub>O/CIMENTO=0.58

		<div>07/09/2015 DATA</div> <div>REVISÃO - FOLHA DE REVISÃO REVISÃO/ALTERAÇÃO</div>	
<b>PROJETO ESTRUTURAL CONCRETO</b>			
OBRA: ARENA - CENTRO DE EVENTOS			
PROPRIETÁRIO: PREFEITURA MUNICIPAL DE SÃO JORGE DO IVAI			
CONTEÚDO: ARMADURAS DOS PILARES QUE TERMINAM EM TETO (01/02)			
LOCAL: RUA DR. MICHEL FELPE - LOTE 128-B - GUERÁ ANDRÁ - SÃO JORGE DO IVAI - PARANÁ			
141220-EST_L3_R0.dwg		RESPONSÁVEL TÉCNICO PELO PROJETO	
DATA: MARÇO/2015			
Nº PÁGINAS			
15/28		<b>PAULO LEÃO</b> ENGENHEIRO CIVIL CREA Nº 45577 paulo.leao@leaoaprojetos.com.br www.leaoaprojetos.com.br	