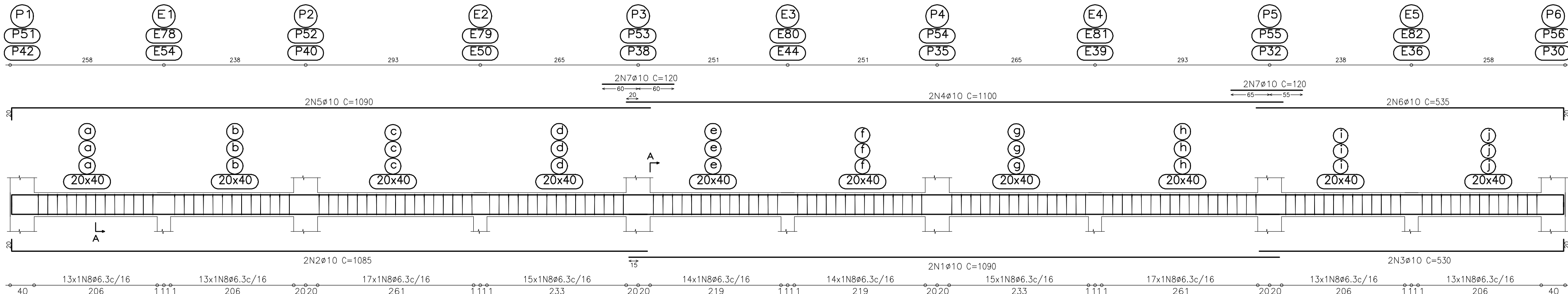
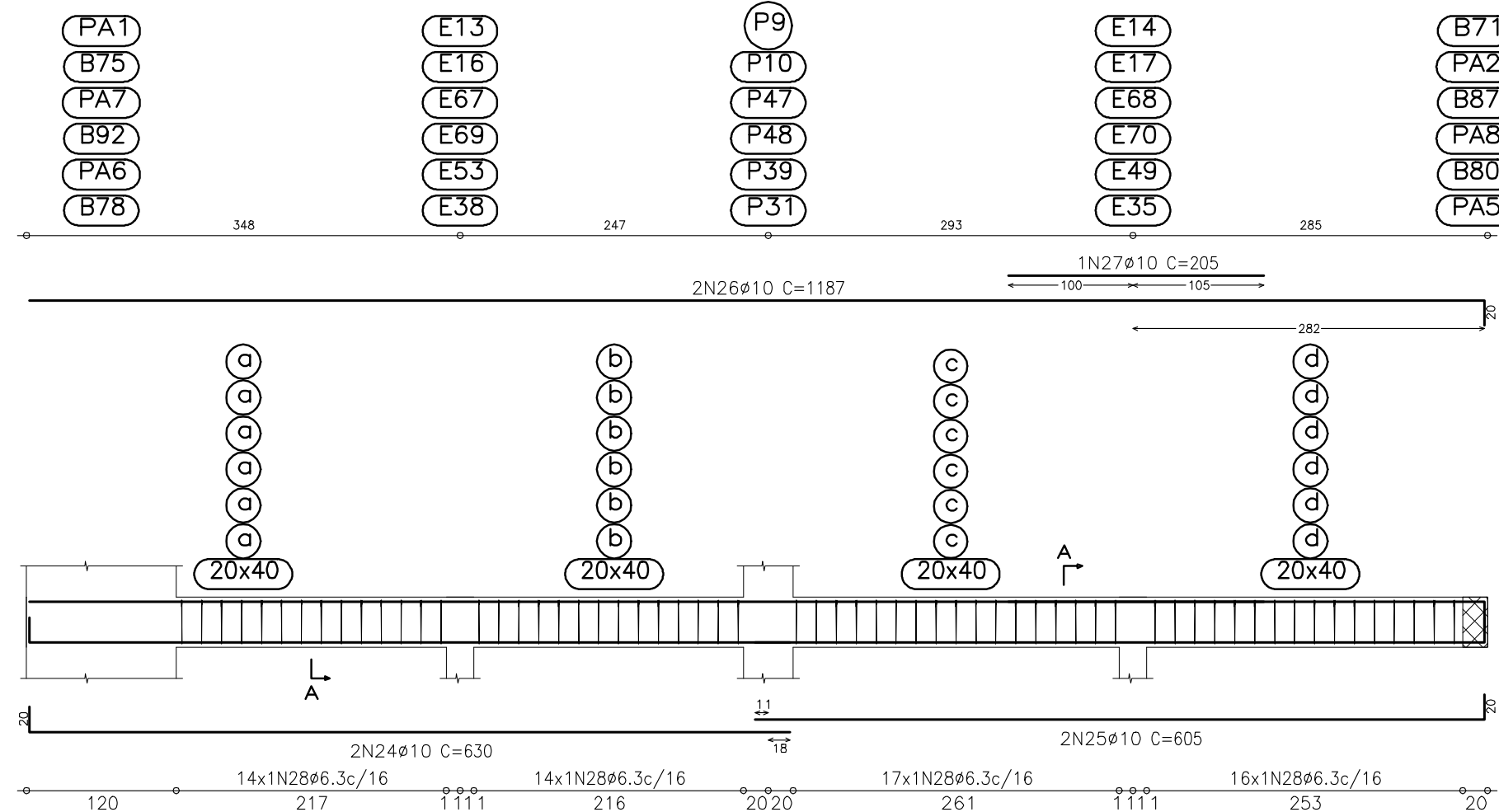


V1
V34
V75

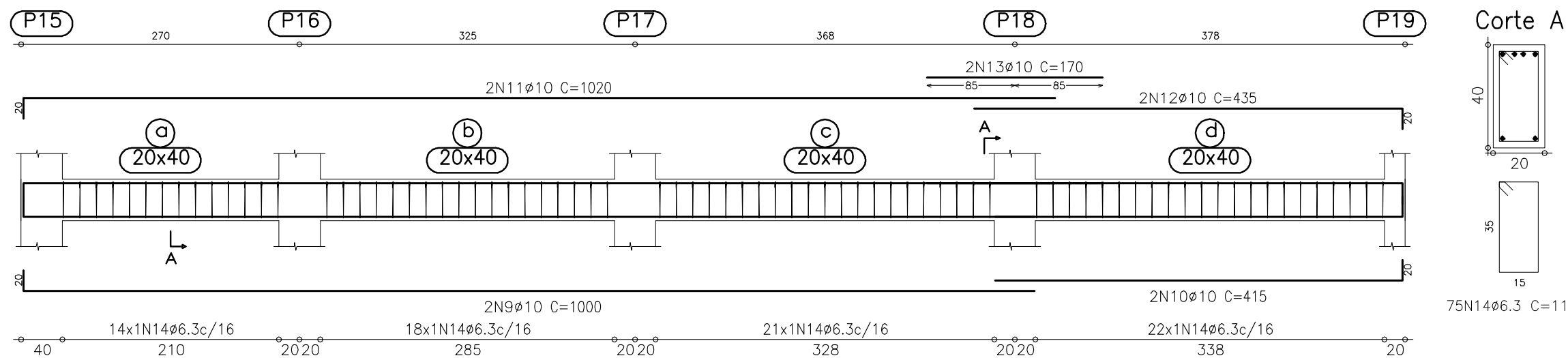


| | | Resumo Aço | Comp. total | Peso | Total |
|---|---------|------------|-------------|------|-------|
| | | Térreo | (m) | (kg) | |
| <div>Térreo</div> <div>Desenho de vigas</div> <div>Concreto: C30, em geral</div> <div>Aço: CA-50-A e CA-60-B</div> <div>Escala vigas: 1:50</div> <div>Escala seções: 1:20</div> | CA-50-A | Ø6.3 | 3329.0 | 823 | |
| | | Ø8 | 31.2 | 12 | |
| | | Ø10 | 2355.6 | 1479 | |
| | | Ø12.5 | 269.6 | 265 | 2579 |
| | | | | | |
| | | | | | |

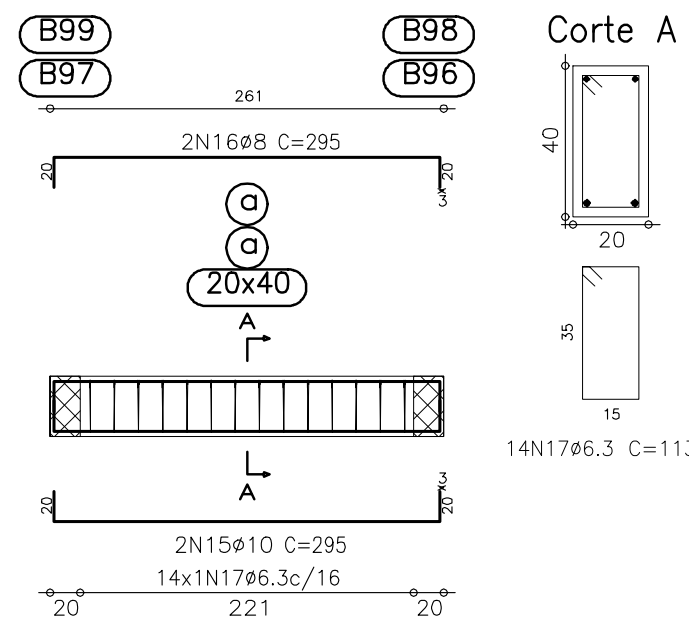
V7
V8
V28
V29
V68
V69



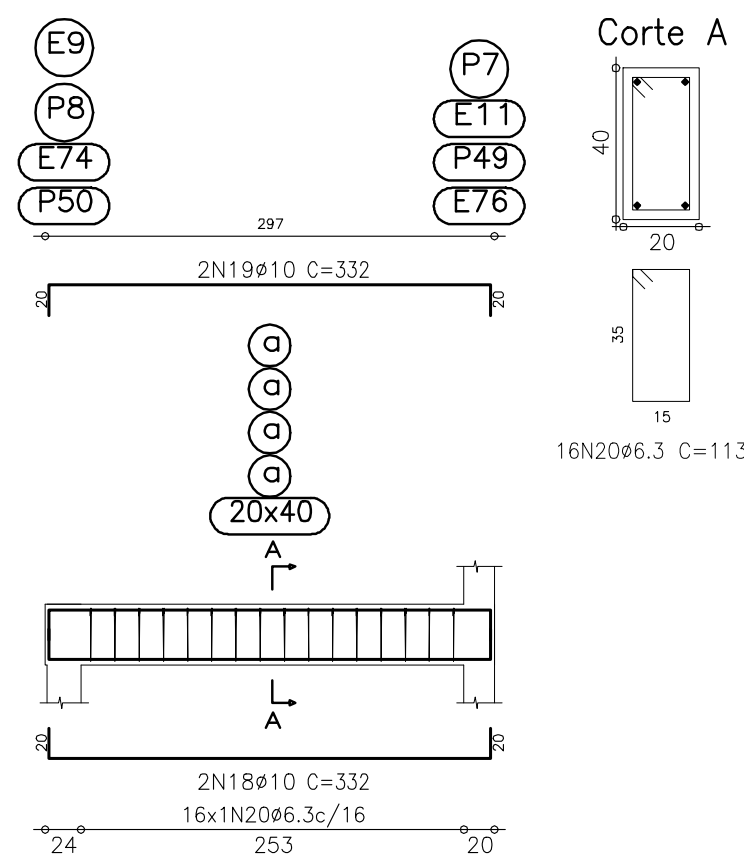
V2



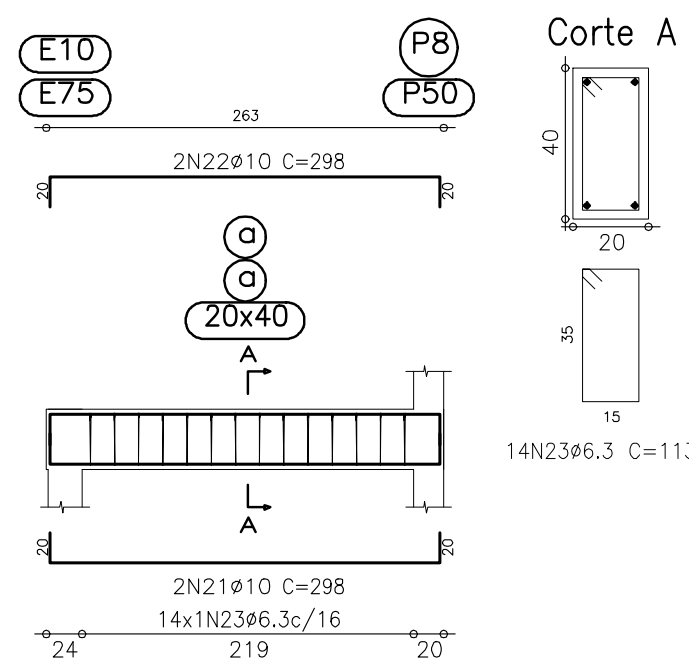
V3
V33



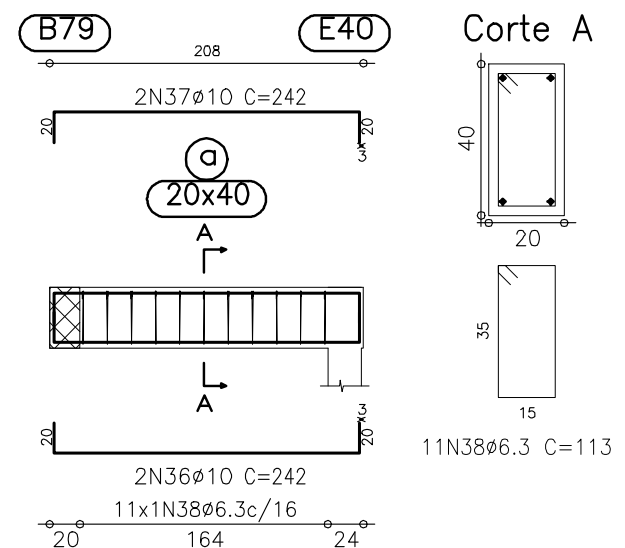
V4
V5
V31
V32



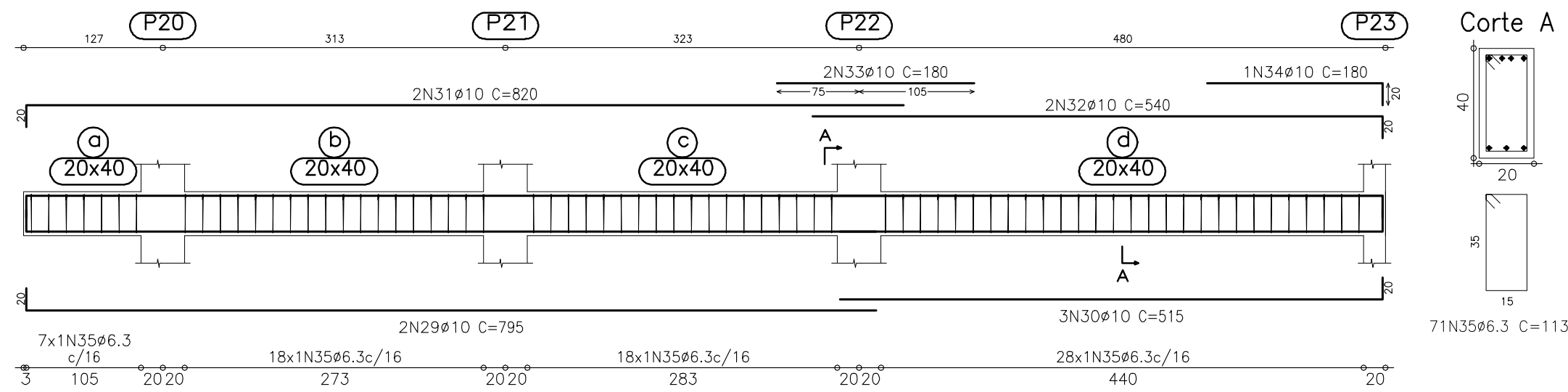
V6
V30



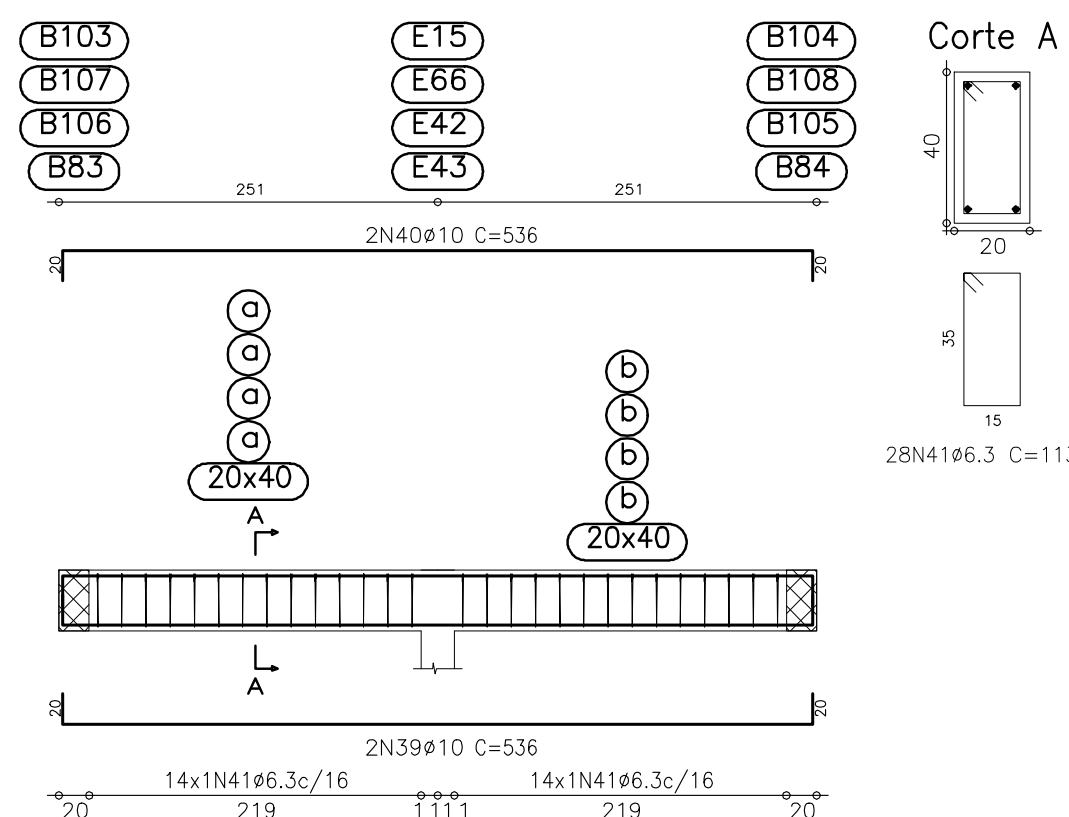
V16



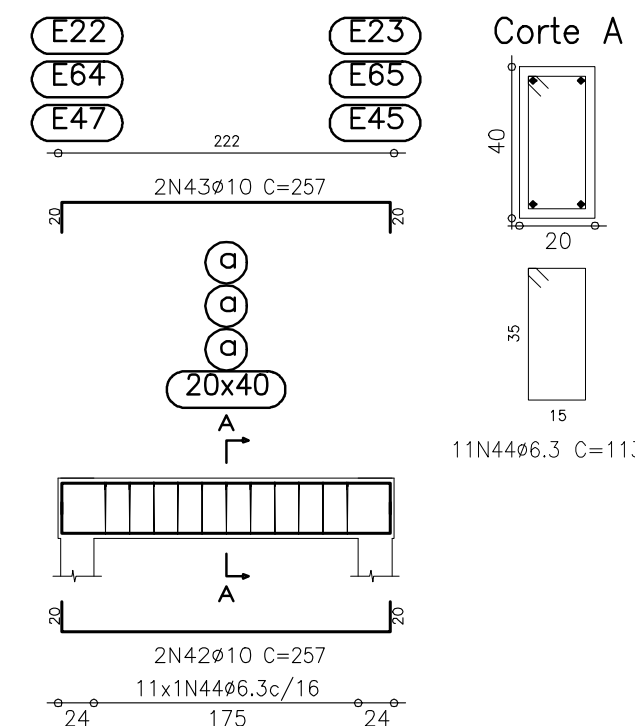
V9



V10
V27
V67
V74



V11
V26
V65



ARMADURA DAS VIGAS DO TÉRREO (01/04)

ESCALA 1/50 - ESCALA 1/20 (CORTES)

| Elemento | Pos. | Diam. | Q. | Dob. (cm) | Reto (cm) | Dob. (cm) | Comp. (cm) | Total (cm) | CA-50-A (kg) | CA-60-B (kg) |
|--------------------------|------|-------|-----|--------------|--------------|--------------|---------------|---------------|-----------------|-----------------|
| V1=V34=V75 | 1 | Ø10 | 2 | | 1090 | | 1090 | 2180 | 13.7 | |
| | 2 | Ø10 | 2 | 20 | 1065 | | 1085 | 2170 | 13.6 | |
| | 3 | Ø10 | 2 | | 510 | 20 | 530 | 1060 | 6.7 | |
| | 4 | Ø10 | 2 | | 1100 | | 1100 | 2200 | 13.8 | |
| | 5 | Ø10 | 2 | 20 | 1070 | | 1090 | 2180 | 13.7 | |
| | 6 | Ø10 | 2 | | 515 | 20 | 535 | 1070 | 6.7 | |
| | 7 | Ø10 | 4 | | 120 | | 120 | 480 | 3.0 | |
| | 8 | Ø6.3 | 144 | | | | 113 | 16272 | 40.2 | |
| Total: | | | | | | | | | 111.4 | |
| (x3): | | | | | | | | | 334.2 | |
| V2 | 9 | Ø10 | 2 | 20 | 980 | | 1000 | 2000 | 12.6 | |
| | 10 | Ø10 | 2 | | 395 | 20 | 415 | 830 | 5.2 | |
| | 11 | Ø10 | 2 | 20 | 1000 | | 1020 | 2040 | 12.8 | |
| | 12 | Ø10 | 2 | | 415 | 20 | 435 | 870 | 5.5 | |
| | 13 | Ø10 | 2 | | 170 | | 170 | 340 | 2.1 | |
| | 14 | Ø6.3 | 75 | | | | 113 | 8475 | 21.0 | |
| Total: | | | | | | | | | 59.2 | |
| (x2): | | | | | | | | | 118.4 | |
| V3=V33 | 15 | Ø10 | 2 | 20 | 255 | 20 | 295 | 590 | 3.7 | |
| | 16 | Ø8 | 2 | 20 | 255 | 20 | 295 | 590 | 2.3 | |
| | 17 | Ø6.3 | 14 | | | | 113 | 1582 | 3.9 | |
| Total: | | | | | | | | | 9.9 | |
| (x2): | | | | | | | | | 19.8 | |
| V4=V5=V31 V32 | 18 | Ø10 | 2 | 20 | 292 | 20 | 332 | 664 | 4.2 | |
| | 19 | Ø10 | 2 | 20 | 292 | 20 | 332 | 664 | 4.2 | |
| | 20 | Ø6.3 | 16 | | | | 113 | 1808 | 4.5 | |
| Total: | | | | | | | | | 12.9 | |
| (x4): | | | | | | | | | 51.6 | |
| V6=V30 | 21 | Ø10 | 2 | 20 | 258 | 20 | 298 | 596 | 3.7 | |
| | 22 | Ø10 | 2 | 20 | 258 | 20 | 298 | 596 | 3.7 | |
| | 23 | Ø6.3 | 14 | | | | 113 | 1582 | 3.9 | |
| Total: | | | | | | | | | 11.3 | |
| (x2): | | | | | | | | | 22.6 | |
| V7=V8=V28 V29=V68=V69 | 24 | Ø10 | 2 | 20 | 610 | | 630 | 1260 | 7.9 | |
| | 25 | Ø10 | 2 | | 585 | 20 | 605 | 1210 | 7.6 | |
| | 26 | Ø10 | 2 | | 1167 | | 1187 | 2374 | 14.9 | |
| | 27 | Ø10 | 1 | | 205 | | 205 | 205 | 1.3 | |
| | 28 | Ø6.3 | 6 | | | | 113 | 6893 | 17.0 | |
| Total: | | | | | | | | | 48.7 | |
| (x6): | | | | | | | | | 292.2 | |
| V9 | 29 | Ø10 | 2 | 20 | 775 | | 795 | 1590 | 10.0 | |
| | 30 | Ø10 | 3 | | 495 | 20 | 515 | 1545 | 9.7 | |
| | 31 | Ø10 | 2 | 20 | 800 | | 820 | 1640 | 10.3 | |
| | 32 | Ø10 | 2 | | 520 | 20 | 540 | 1080 | 6.8 | |
| | 33 | Ø10 | 2 | | 180 | | 180 | 360 | 2.3 | |
| | 34 | Ø10 | 1 | | 160 | 20 | 180 | 180 | 1.1 | |
| | 35 | Ø6.3 | 7 | | | | 113 | 8023 | 19.8 | |
| Total: | | | | | | | | | 60.0 | |
| V16 | 36 | Ø10 | 2 | 20 | 202 | 20 | 242 | 484 | 3.0 | |
| | 37 | Ø10 | 2 | 20 | 202 | 20 | 242 | 484 | 3.0 | |
| | 38 | Ø6.3 | 1 | | | | 113 | 1243 | 3.1 | |
| Total: | | | | | | | | | 9.1 | |
| V10=V27=V67 V74 | 39 | Ø10 | 2 | 20 | 496 | 20 | 536 | 1072 | 6.7 | |
| | 40 | Ø10 | 2 | 20 | 496 | 20 | 536 | 1072 | 6.7 | |
| | 41 | Ø6.3 | 28 | | | | 113 | 3164 | 7.8 | |
| Total: | | | | | | | | | 21.2 | |
| (x4): | | | | | | | | | 84.8 | |
| V11=V26=V65 | 42 | Ø10 | 2 | 20 | 217 | 20 | 257 | 514 | 3.2 | |
| | 43 | Ø10 | 2 | 20 | 217 | 20 | 257 | 514 | 3.2 | |
| | 44 | Ø6.3 | 1 | | | | 113 | 1243 | 3.1 | |
| Total: | | | | | | | | | 9.5 | |
| (x3): | | | | | | | | | 28.5 | |
| Ø6.3: | | | | | | | | | 340.6 | 0.0 |
| Ø8: | | | | | | | | | 4.6 | 0.0 |
| Ø10: | | | | | | | | | 616.8 | 0.0 |
| Total: | | | | | | | | | 962.0 | 0.0 |

FCK=30.0 MPa - FATOR H₂O/CIMENTO=0.58

| | | | | | |
|---|--|----------------------------------|--|----------------------------|--|
| | | <input type="text"/> | | <input type="text"/> | |
| 07/09/2015 | | DATA | | REVISÃO - FOLHA DE INICIAL | |
| 141220-EST_L3_R0.dwg | | RESPONSÁVEL TÉCNICO PELO PROJETO | | | |
| DATA: MARÇO/2015 | | | | | |
| Nº PÁGINAS | | | | | |
| LOCAL: RUA DR. MICHEL FELPE - LOTE 125-8 - GUERÁ ANDRÁ - SÃO JORGE DO IVAI - PARANÁ | | | | | |
| PROPRIETÁRIO: | | | | | |
| PREFEITURA MUNICIPAL DE SÃO JORGE DO IVAI | | | | | |
| CONTEÚDO: | | | | | |
| ARMADURA DAS VIGAS DO TÉRREO (01/04) | | | | | |
| LOCAL: RUA DR. MICHEL FELPE - LOTE 125-8 - GUERÁ ANDRÁ - SÃO JORGE DO IVAI - PARANÁ | | | | | |
| 141220-EST_L3_R0.dwg | | | | | |
| DATA: MARÇO/2015 | | | | | |
| Nº PÁGINAS | | | | | |
| PAULO LEÃO | | | | | |
| ENGENHEIRO CIVIL | | | | | |
| CREA - 187241/D | | | | | |
| LEÃO Projetos Complementares LTDA | | | | | |
| Av. Cerro Azul, 2688 - Jardim Novo Horizonte - 44.3026-1800 | | | | | |
| CHPJ 08.956.061/0001-39 - CREA Nº 45577 | | | | | |
| paulo.leao@leaooprojetos.com.br | | | | | |
| www.leaooprojetos.com.br | | | | | |