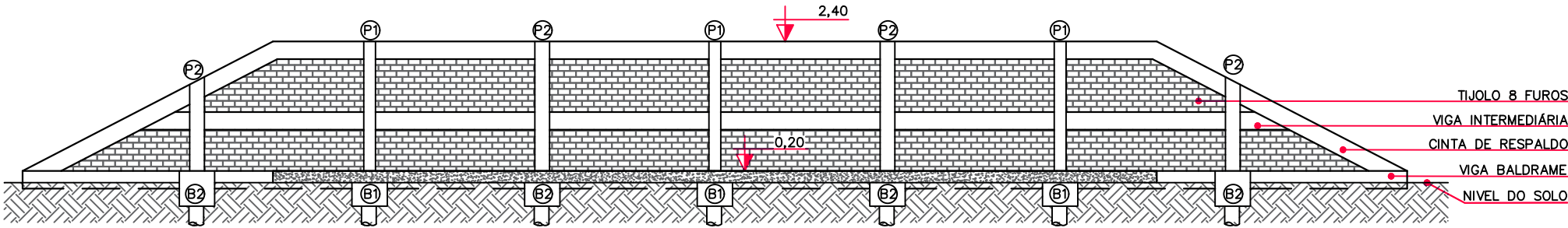
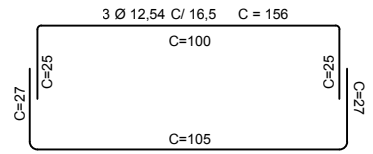
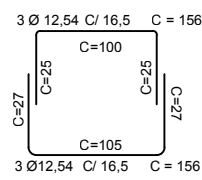
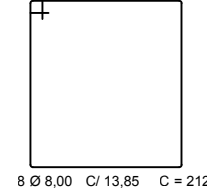
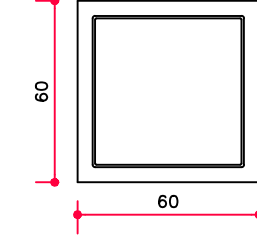
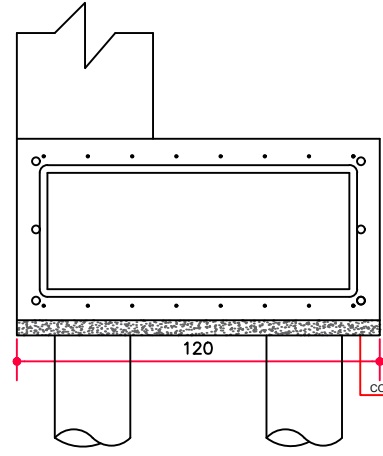
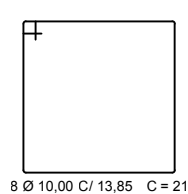
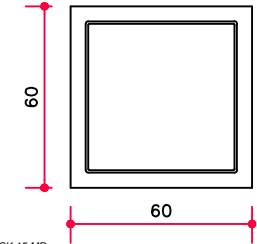
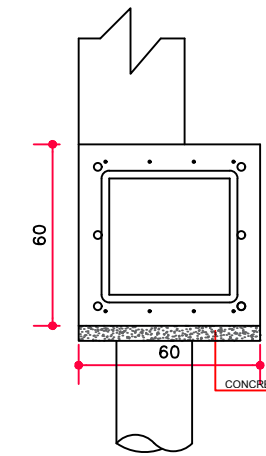
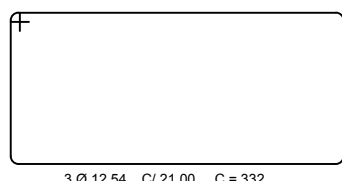
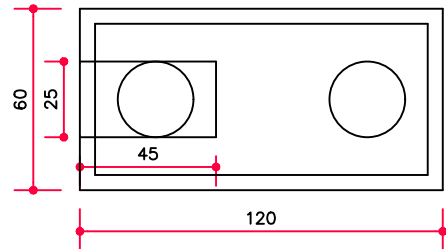
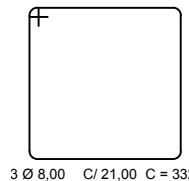
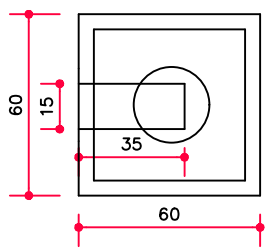


PLANTA ESTRUTURA
1:100

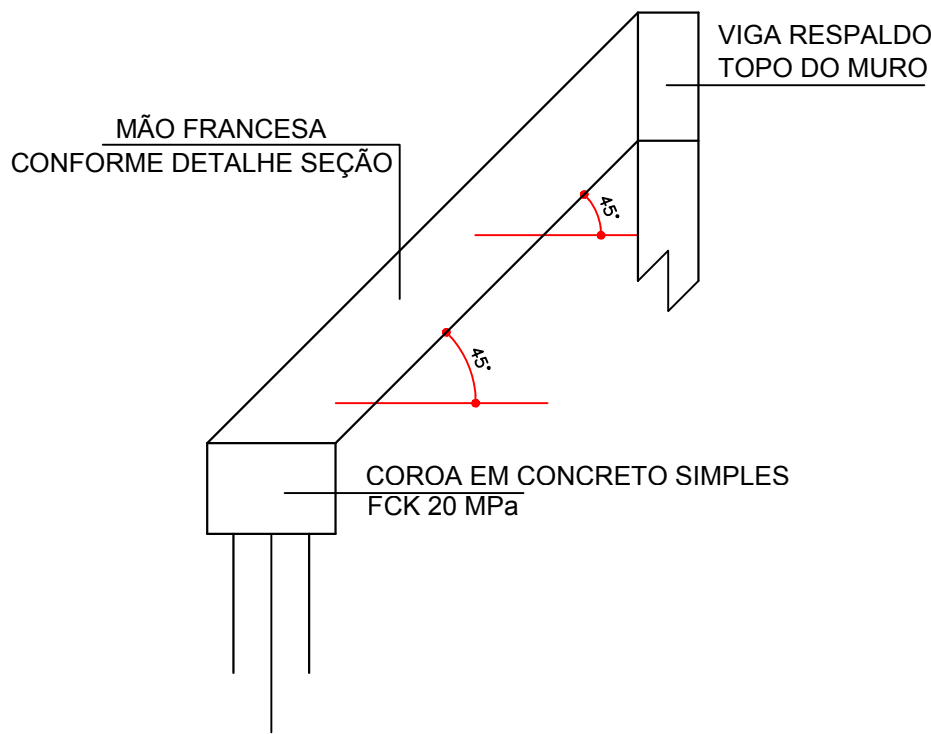


DETALHE ESTRUTURA
1:100

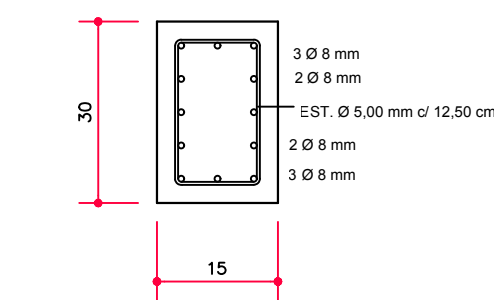


BLOCO 01 (60X60)
1/25

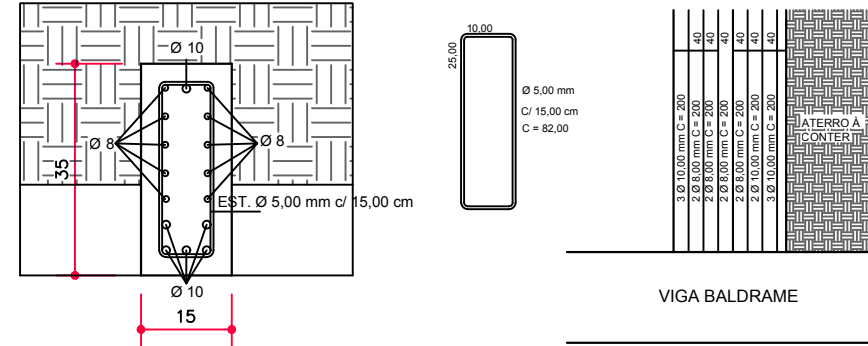
BLOCO 02 (60X120)
1/25



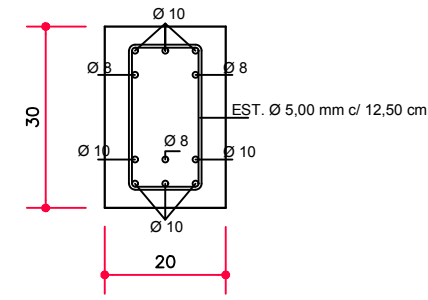
ESCORA/MÃO FRANCESA
SEM ESCALA



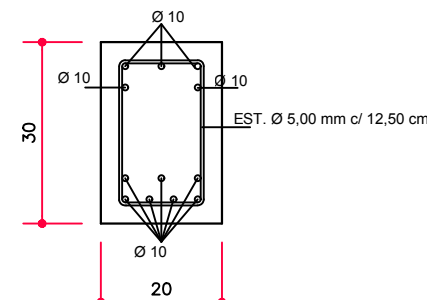
ESCORA/MÃO FRANCESA
DETALHE SEÇÃO
SEM ESCALA



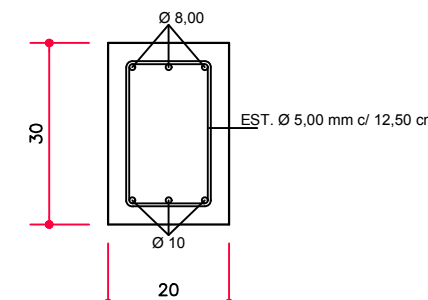
DETALHE PILAR 01
SEM ESCALA



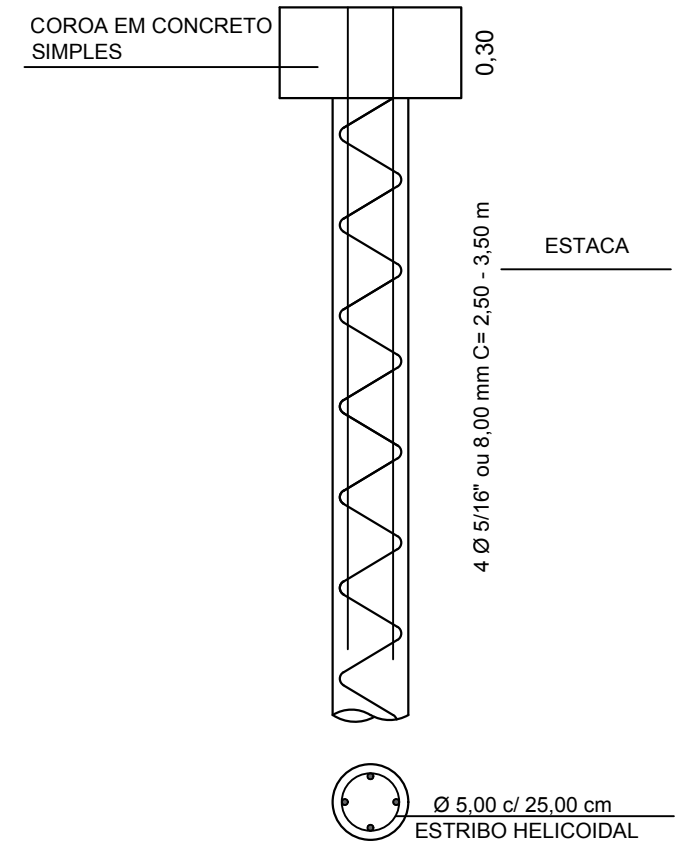
VIGA BALDRAME
SEM ESCALA



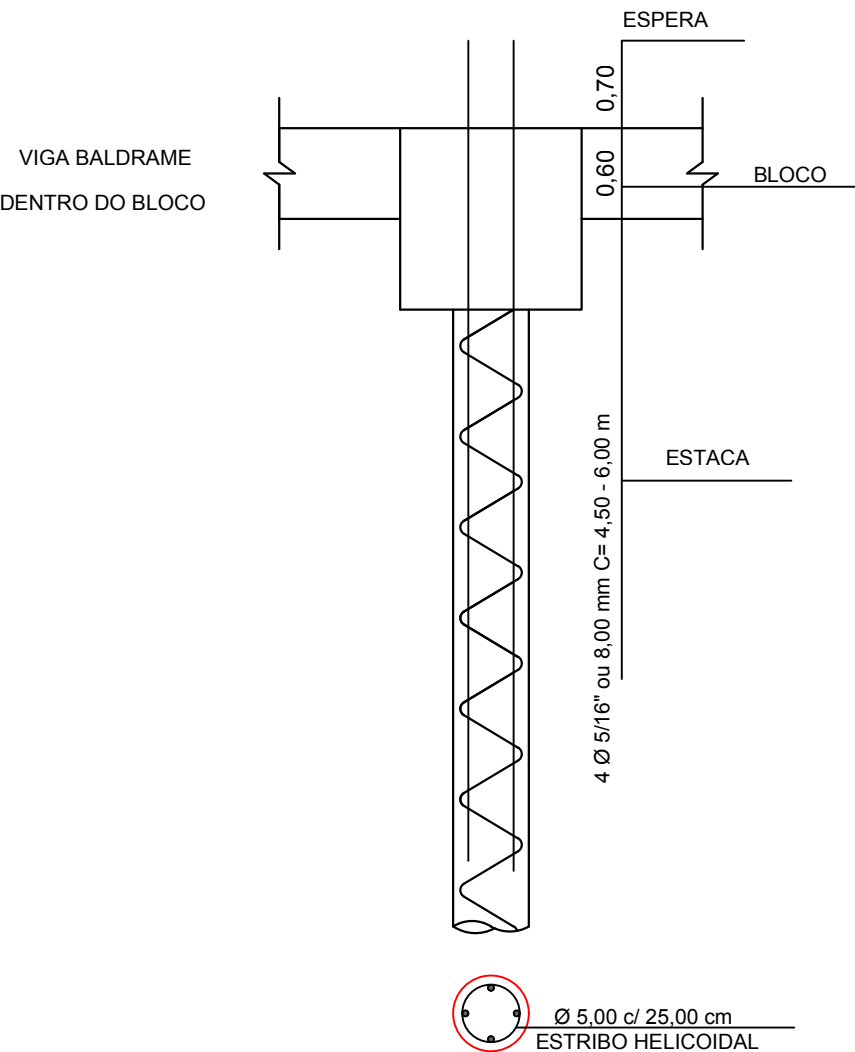
VIGA RESPALDO
SEM ESCALA



VIGA INTERMEDIÁRIA
SEM ESCALA



DETALHE ESTACA
MÃO FRANCESA
SEM ESCALA



DETALHE ESTACA
BLOCOS
SEM ESCALA



PREFEITURA MUNICIPAL DE PRADO FERREIRA
LEI Nº 11.267 - 21/12/1995 CNPJ 01.613.136/0001-30
RUA SÃO PAULO, 191 - FONE (43) 3244-1143 - CEP 86618-000
PRADO FERREIRA - ESTADO DO PARANÁ

PROJETO ESTRUTURAL:
ESTAÇÃO DE TRANSBORDO DE LIXO

ASSUNTO:
PLANTAS, CORTES E DETALHAMENTOS

FOLHA: 02/02
ESCALA: INDICADA
LOCAL: PRADO FERREIRA-PR
DATA: 04/2019

PREFEITURA MUNICIPAL DE PRADO FERREIRA
CNPJ: 01.613.136/0001-30

Arquiteta Sámela Machado
CAU Nº 200256-6