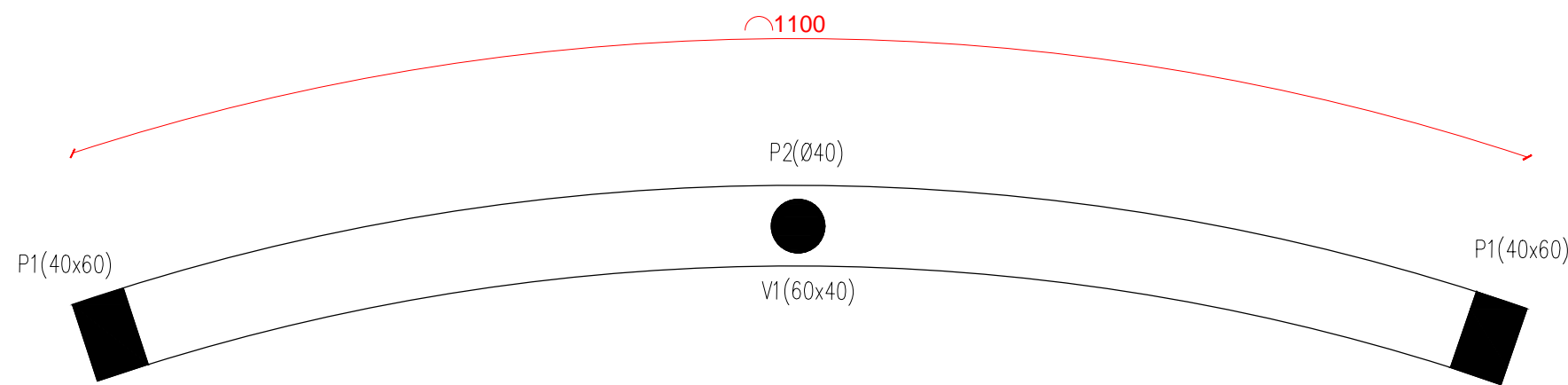
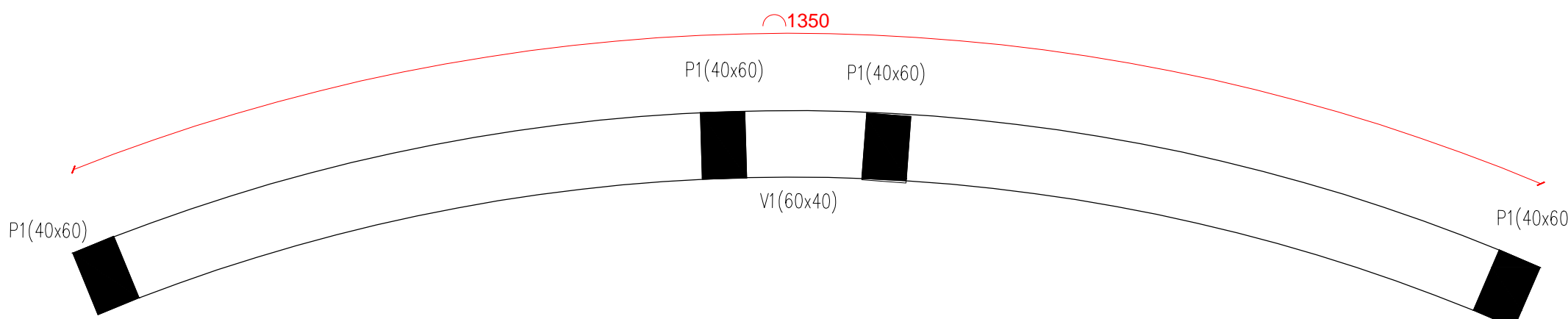


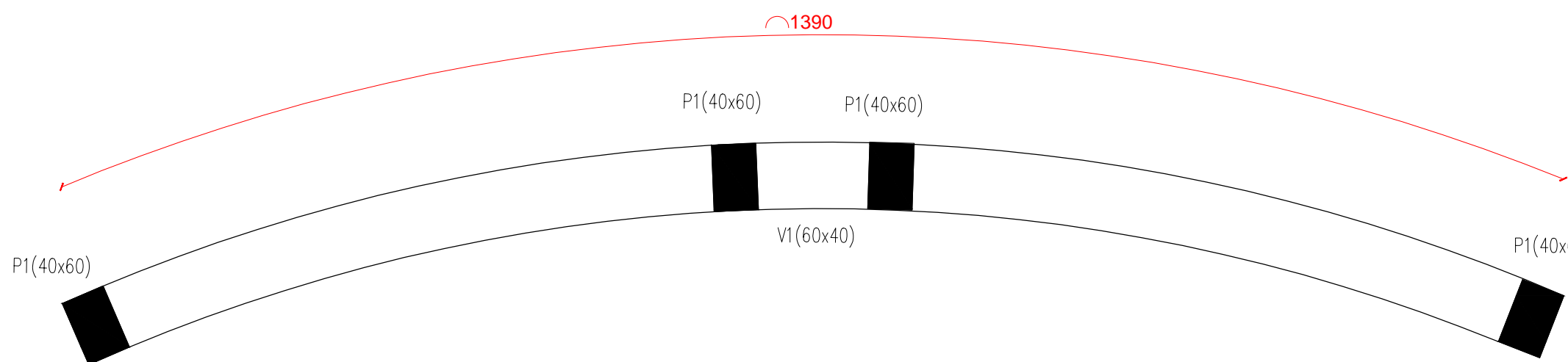
PLANTA BAIXA PORTAL DECORATIVO -DET-01  
ESCALA: 1/100



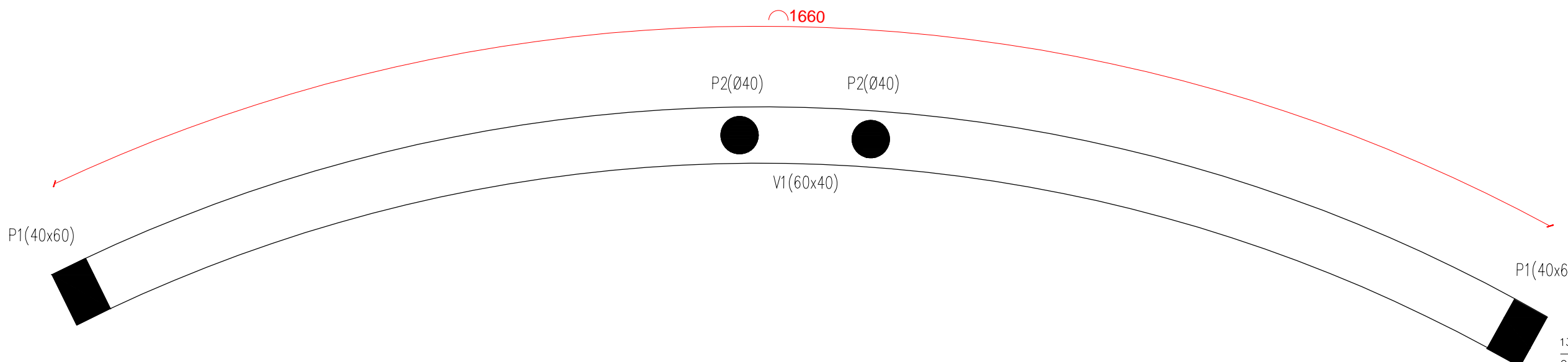
PLANTA BAIXA PORTAL DECORATIVO -DET-02  
ESCALA: 1/100



PLANTA BAIXA PORTAL DECORATIVO -DET-03  
ESCALA: 1/100

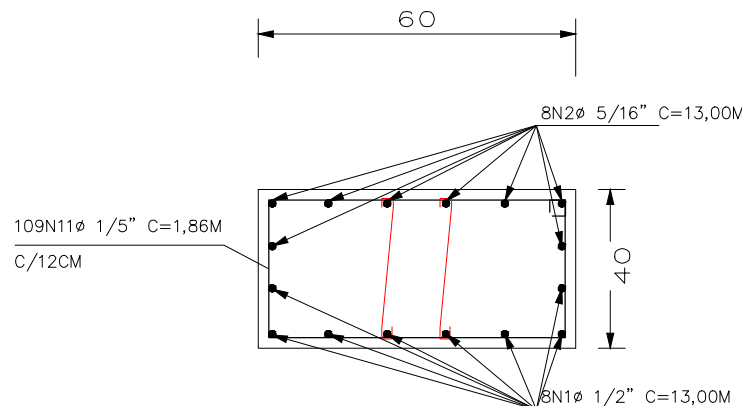


PLANTA BAIXA PORTAL DECORATIVO -DET-04  
ESCALA: 1/100

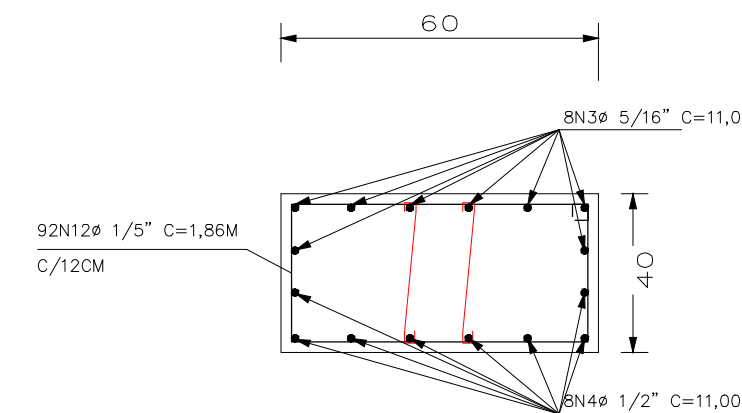


PLANTA BAIXA PORTAL DECORATIVO -DET-05  
ESCALA: 1/100

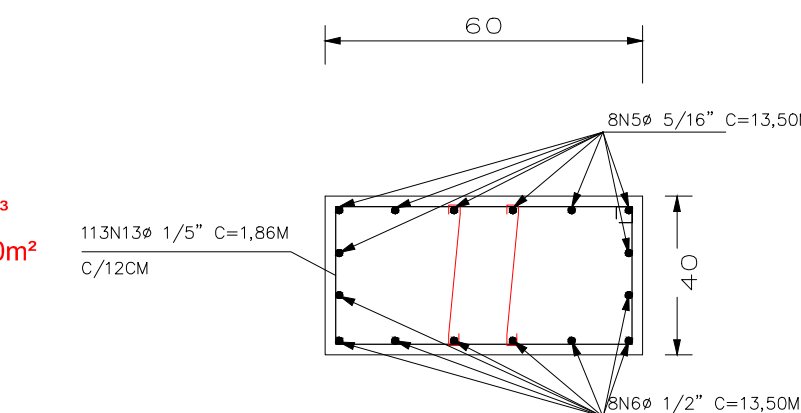
DETALHAMENTO VIGA  
(60X40)  
13,00 METROS



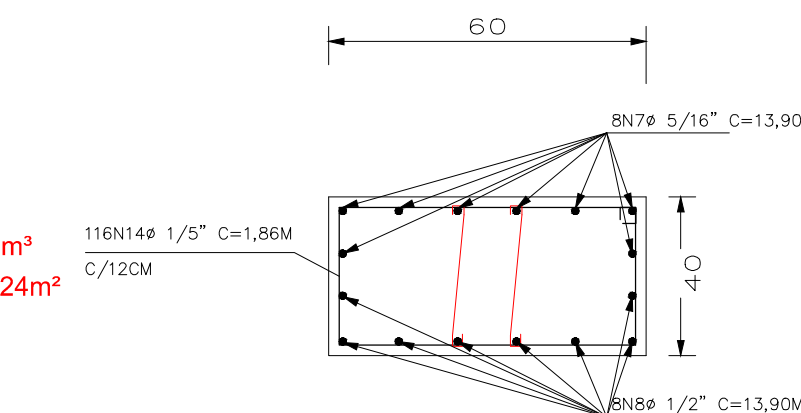
DETALHAMENTO VIGA  
(60X40)  
11,00 METROS



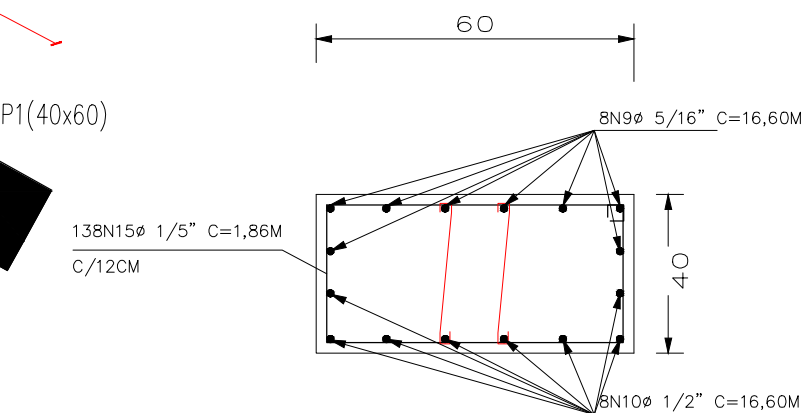
DETALHAMENTO VIGA  
(60X40)  
13,50 METROS



DETALHAMENTO VIGA  
(60X40)  
13,90 METROS



DETALHAMENTO VIGA  
(60X40)  
16,60 METROS



Vol. concreto total = 3,12m³  
Área de forma total = 20,80m²  
fck = 200.00 kgf/cm²

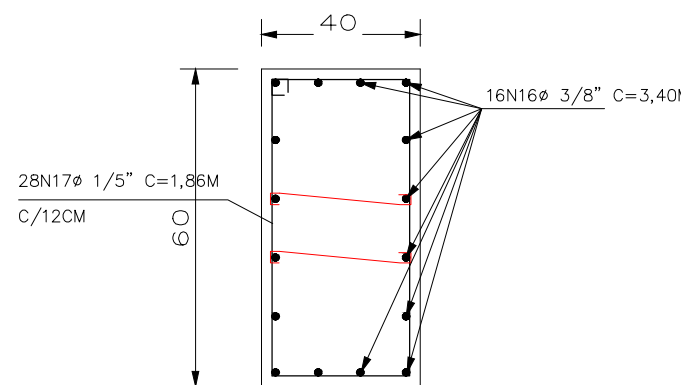
Vol. concreto total = 2,64m³  
Área de forma total = 17,60m²  
fck = 200.00 kgf/cm²

Vol. concreto total = 3,24m³  
Área de forma total = 21,60m²  
fck = 200.00 kgf/cm²

Vol. concreto total = 3,34m³  
Área de forma total = 22,24m²  
fck = 200.00 kgf/cm²

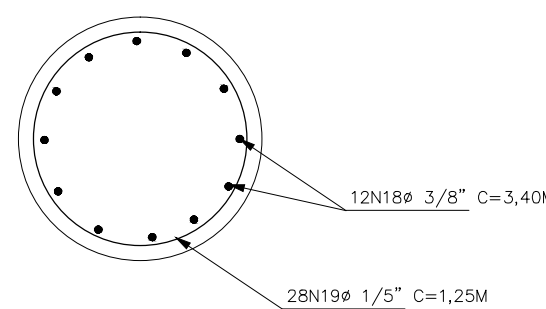
Vol. concreto total = 3,98m³  
Área de forma total = 26,56m²  
fck = 200.00 kgf/cm²

DETALHAMENTO PILAR ("P1")  
(60X40) 14UND  
3,40 METROS



Vol. concreto total = 11,42m³  
Área de forma total = 95,20m²  
fck = 200.00 kgf/cm²

DETALHAMENTO PILAR ("P2")  
(Ø40) 5UND  
3,40 METROS



Vol. concreto total = 2,14m³  
Área de forma total = 21,36m²  
fck = 200.00 kgf/cm²

NUMERO	AÇO	BITOLA (POL)	COMP. (m)	QUANTIDADE UND	PESO CA 50 (kg)	PESO CA 60 (kg)
N01	CA50	1/2	13,00	8,00	100,15	
N02	CA50	5/16	13,00	8,00	41,08	
N03	CA50	5/16	11,00	8,00	37,76	
N04	CA50	1/2	11,00	8,00	84,74	
N05	CA50	5/16	13,50	8,00	65,88	
N06	CA50	1/2	13,50	8,00	104,00	
N07	CA50	5/16	13,90	8,00	67,83	
N08	CA50	1/2	13,90	8,00	107,09	
N09	CA50	5/16	16,60	8,00	81,00	
N10	CA50	1/2	16,60	8,00	127,89	
N11	CA60	1/5	1,86	109,00		30,20
N12	CA60	1/5	1,86	92,00		25,97
N13	CA60	1/5	1,86	113,00		31,32
N14	CA60	1/5	1,86	116,00		32,15
N15	CA60	1/5	1,86	138,00		38,25
N16	CA50	3/8	3,40	224,00	300,83	
N17	CA60	1/5	1,86	392,00		108,64
N18	CA50	3/8	3,40	60,00	80,58	
N19	CA60	1/5	1,25	140,00		26,07
TOTAL					1.198,83	292,60

## PROJETO ESTRUTURAL

### ESTRUTURA DOS PORTAIS

#### VIGAS E PILARES

DISCRIMINAÇÃO		
READEQUAÇÃO URBANA PRAÇA TIRADENTES		
LOCAL		
PRAÇA TIRADENTES, JARDIM AMÉRICA - ASSIS CHATEAUBRIAND - PR		
PROPRIETÁRIO		
MUNICÍPIO DE ASSIS CHATEAUBRIAND - PARANÁ		
FOLHA	MUNICÍPIO DE ASSIS CHATEAUBRIAND - PR	RESPONSÁVEL TÉCNICO
03/05		
ESCALA		
INDICADA		
DATA		
05/2018		